

ПРЕДПРИЯТИЕ МАКСАЭРО

- Производство воздуховодов и систем вентиляции
- Клапаны противопожарные
- Клапаны дымоудаления
- Вентиляторы общепром, дымоудаления, крышные

220056, г. Минск, ул. Стариновская, 15

Тел./факс: +375 17 244-67-44, 258-67-51, 347-73-56, 252-54-27

Velcom: +375 29 603-88-99

E-mail: olegaero@yandex.by

www.maxaero.by



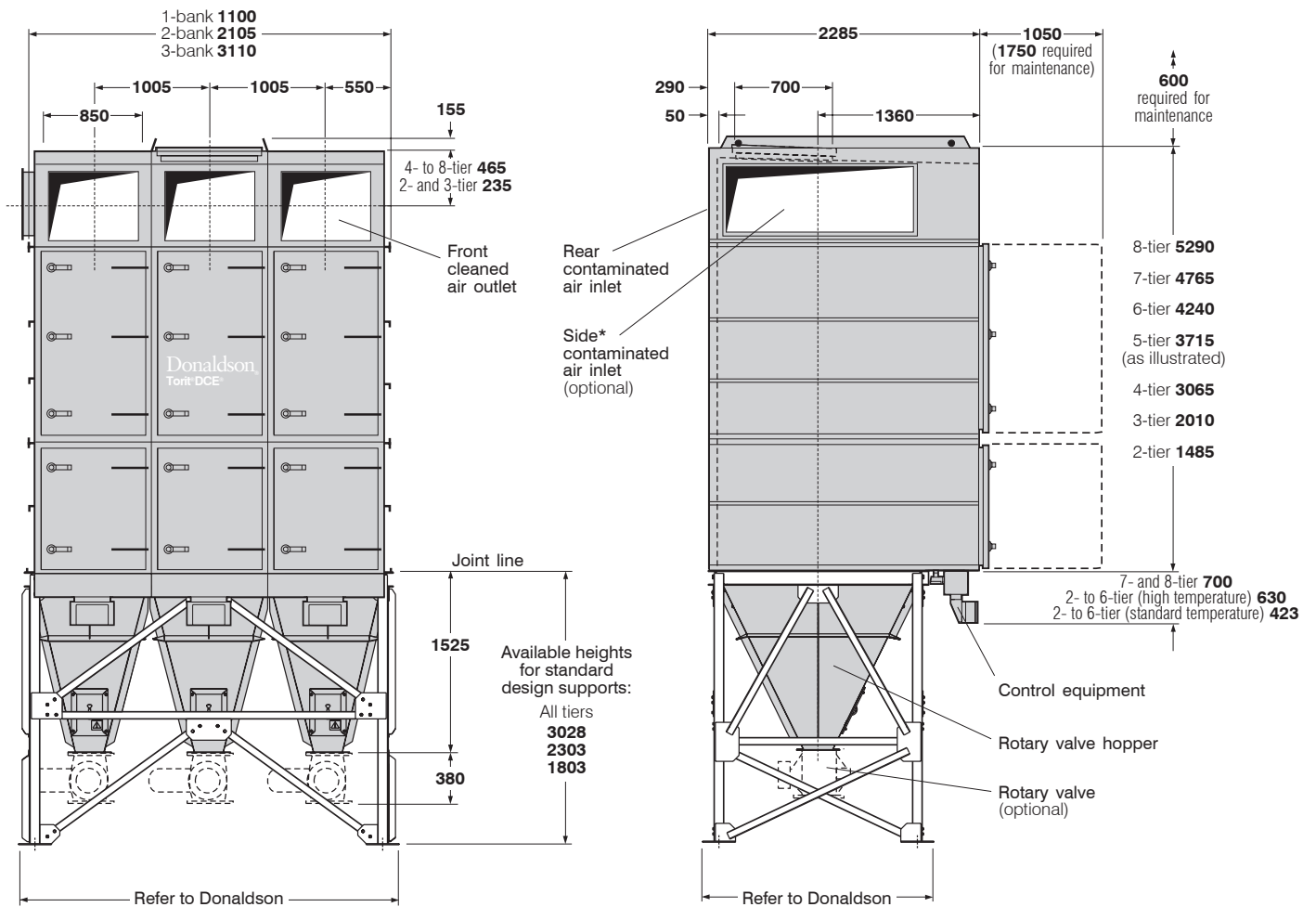
Рукавный пылесборник Donaldson Dalamatric



DATA SHEET

Dalamatic Cased Dust Collectors

Series DLM 15



FRONT ELEVATION

SIDE ELEVATION

DALAMATIC CASED COLLECTOR WITH ROTARY VALVE HOPPERS

3-bank, 5-tier collector (DLM 3/5/15) illustrated. Larger collectors are assembled on site from suitable combinations of the above sizes.

*4- to 8-tier collectors; 2- and 3-bank either end, 4- to 6-bank both ends.

NOTE: For foundation details refer to Donaldson.

SPECIFICATIONS

Designation	Number of banks (a)	Number of tiers (b)	Number of cells (a x b)	Filtration area	Air volume – FAD* at 12 sec. intervals	
DLM 1/2/15†	1	2	2	30 m ²	7.4 m ³ /h	4.3 cfm
DLM 1/3/15†	1	3	3	45 m ²	9.5 m ³ /h	5.6 cfm
DLM 1/4/15	1	4	4	60 m ²	13.7 m ³ /h	8.1 cfm
DLM 1/5/15	1	5	5	75 m ²	13.7 m ³ /h	8.1 cfm
DLM 1/6/15	1	6	6	90 m ²	24.9 m ³ /h	14.6 cfm
DLM 1/7/15	1	7	7	105 m ²	28.9 m ³ /h	17.0 cfm
DLM 1/8/15	1	8	8	120 m ²	28.9 m ³ /h	17.0 cfm
DLM 2/2/15†	2	2	4	60 m ²	14.7 m ³ /h	8.7 cfm
DLM 2/3/15†	2	3	6	90 m ²	19.0 m ³ /h	11.2 cfm
DLM 2/4/15	2	4	8	120 m ²	27.5 m ³ /h	16.2 cfm
DLM 2/5/15	2	5	10	150 m ²	27.5 m ³ /h	16.2 cfm
DLM 2/6/15	2	6	12	180 m ²	49.8 m ³ /h	29.3 cfm
DLM 2/7/15	2	7	14	210 m ²	57.7 m ³ /h	34.0 cfm
DLM 2/8/15	2	8	16	240 m ²	57.7 m ³ /h	34.0 cfm
DLM 3/2/15†	3	2	6	90 m ²	22.1 m ³ /h	13.0 cfm
DLM 3/3/15†	3	3	9	135 m ²	28.6 m ³ /h	16.8 cfm
DLM 3/4/15	3	4	12	180 m ²	41.1 m ³ /h	24.2 cfm
DLM 3/5/15	3	5	15	225 m ²	41.1 m ³ /h	24.2 cfm
DLM 3/6/15	3	6	18	270 m ²	74.7 m ³ /h	43.9 cfm
DLM 3/7/15	3	7	21	315 m ²	86.6 m ³ /h	51.0 cfm
DLM 3/8/15	3	8	24	360 m ²	86.6 m ³ /h	51.0 cfm

Larger collectors are assembled on site from suitable combinations of the above sizes

There is no limit to the number of banks which may be joined together – e.g. DLM 10/8/15 (80 cells, 1200 m² filtration area)

*Pulse duration: 60 ms (2- to 5-tier), 100 ms (6- to 8-tier). Recommended atmospheric air volume of clean, dry compressed air at the following maximum pressures:

- All 2-tier collectors: 3.4 bar (50 psig)
- All 3-tier collectors: 3.8 bar (55 psig)
- All 4- and 5-tier collectors: 5.2 bar (75 psig)
- All 6- to 8-tier collectors: 6.2 bar (90 psig)

†Supplied pre-assembled. All other collectors are supplied in two or more sections.

DESIGN LIMITS

Standard equipment

Temperature range: (alternatives according to type of sealer used): (1) –10° to +60°C (2) –10° to +200°C

Pressure limits: (a) –500 mm WG (b) –1140 mm WG (For positive pressures please refer to Donaldson)

Dimension tolerances: ±5 mm on main dimensions; ±2 mm on detail dimensions

Equipment is available suitable for use in a potentially explosive atmosphere (Directive 94/9/EC) satisfying the requirements for group II category 2G or 2D and 3G or 3D T135°C

Standard supports (up to 3-bank collectors)

Site wind speed: 102 m/s

Snow load: 0.8 kN/m²

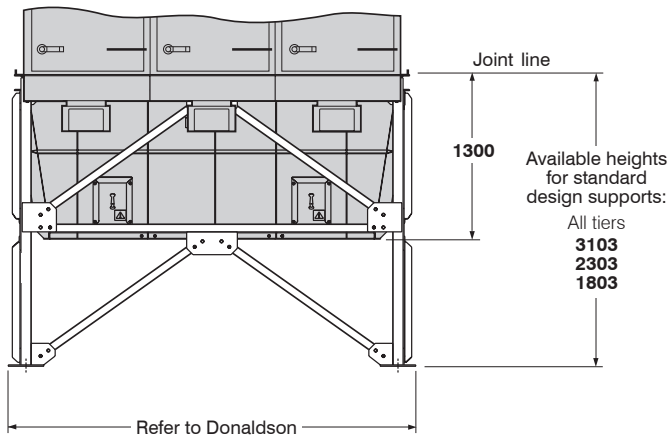
Site exposure category: Country

Live load: 10 kN/m²

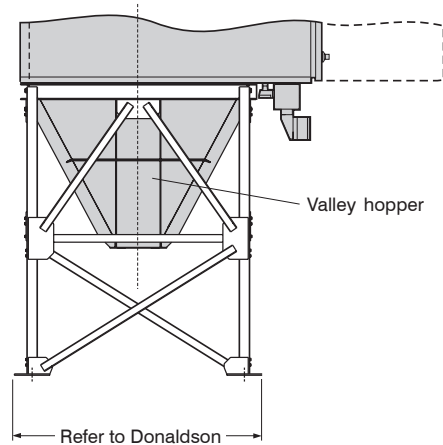
Dust density: 1200 kg/m³ (allowance for hopper full of dust)

Reaction force from explosion: According to EN14491

NOTE: Do not omit bracing without consulting Donaldson

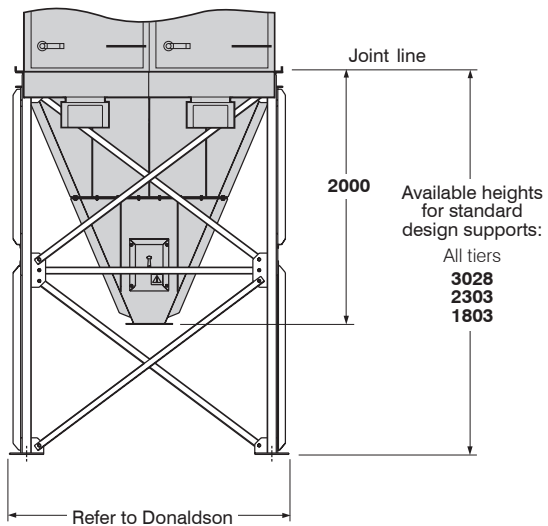


FRONT ELEVATION

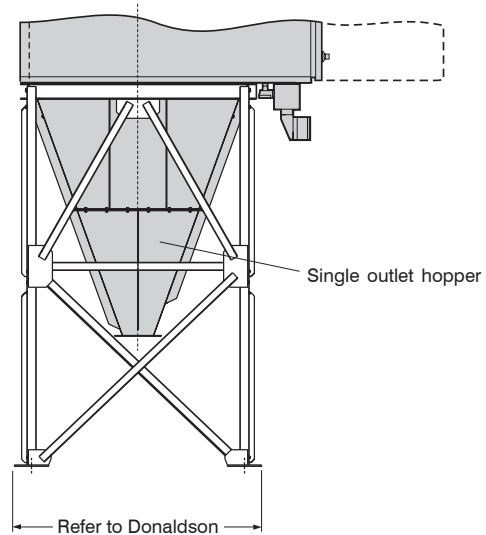


SIDE ELEVATION

MULTI-BANK COLLECTOR WITH VALLEY HOPPER FOR ATTACHMENT TO SCREW CONVEYOR

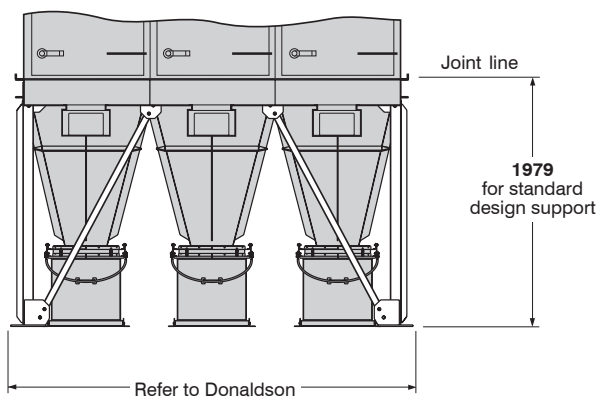


FRONT ELEVATION

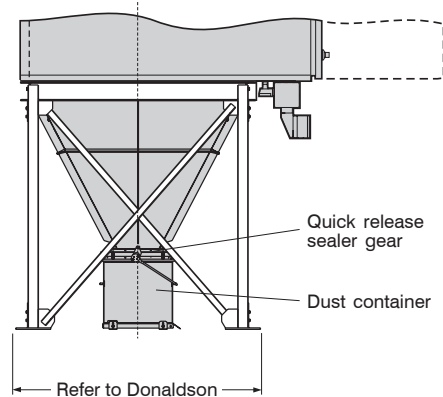


SIDE ELEVATION

2-BANK COLLECTOR WITH SINGLE OUTLET HOPPER



FRONT ELEVATION



SIDE ELEVATION

MULTI-BANK COLLECTOR WITH DUST CONTAINERS

APPROXIMATE NET WEIGHTS

Collector and control equipment only

	1-bank	2-bank	3-bank	4-bank	5-bank	6-bank	7-bank	8-bank	9-bank	10-bank
2-tier	633 kg	1480 kg	2169 kg	2930 kg	3589 kg	4308 kg	5069 kg	5758 kg	6447 kg	7208 kg
3-tier	1034 kg	1918 kg	2802 kg	3806 kg	5175 kg	5574 kg	6578 kg	7462 kg	8346 kg	9350 kg
4-tier	1373 kg	2544 kg	3690 kg	5058 kg	6204 kg	7350 kg	8718 kg	9864 kg	11010 kg	12378 kg
5-tier	1662 kg	3108 kg	4532 kg	6186 kg	7613 kg	9034 kg	10688 kg	12172 kg	13545 kg	15190 kg
6-tier	1906 kg	3533 kg	5136 kg	7036 kg	8669 kg	10242 kg	12142 kg	13745 kg	15348 kg	17248 kg
7-tier	2149 kg	3971 kg	5769 kg	7912 kg	9710 kg	11508 kg	13651 kg	15449 kg	17247 kg	19390 kg
8-tier	2393 kg	4396 kg	6373 kg	8762 kg	10739 kg	12716 kg	15105 kg	17082 kg	19059 kg	21448 kg

For larger sizes please refer to Donaldson. All weights shown indicate heaviest configuration.

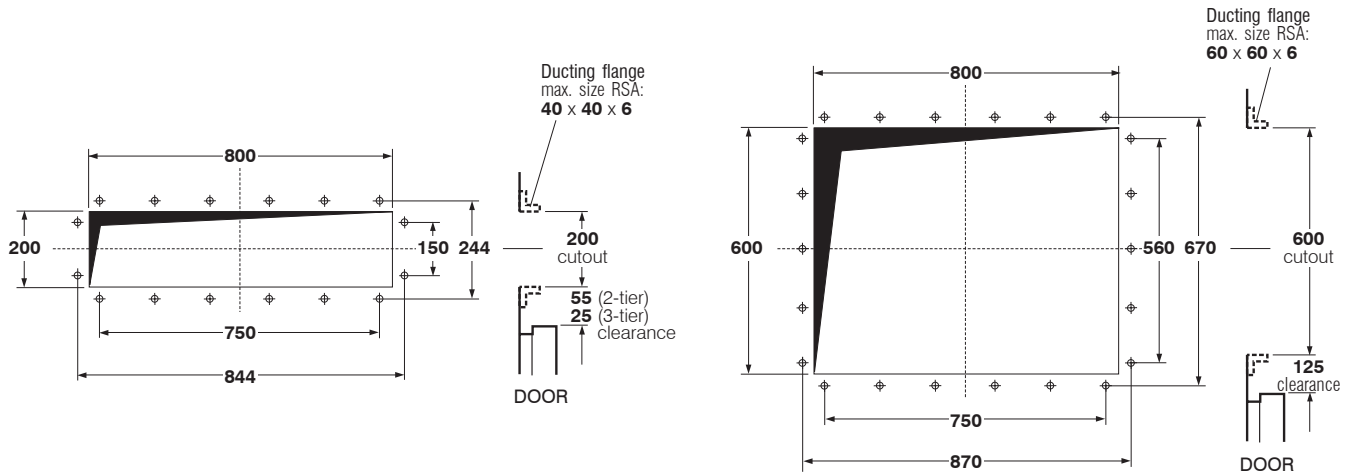
Standard hopper and support only

	2- to 4-tier			5- to 8-tier		
	1-bank	2-bank	3-bank	1-bank	2-bank	3-bank
Rotary valve hopper and support – 1803 mm high	435 kg	690 kg	960 kg	500 kg	780 kg	1175 kg
Rotary valve hopper and support – 2303 mm high	480 kg	780 kg	1090 kg	575 kg	1005 kg	1440 kg
Rotary valve hopper and support – 3028 mm high	530 kg	845 kg	1185 kg	655 kg	1120 kg	1610 kg
Valley hopper and support – 1803 mm high	Not applicable	645 kg	845 kg	Not applicable	680 kg	965 kg
Valley hopper and support – 2303 mm high	Not applicable	740 kg	965 kg	Not applicable	900 kg	1240 kg
Valley hopper and support – 3103 mm high	Not applicable	790 kg	1105 kg	Not applicable	1005 kg	1450 kg
Single outlet hopper and support – 1803 mm high	Not applicable	655 kg	Not applicable	Not applicable	745 kg	Not applicable
Single outlet hopper and support – 2303 mm high	Not applicable	745 kg	Not applicable	Not applicable	970 kg	Not applicable
Single outlet hopper and support – 3028 mm high	Not applicable	810 kg	Not applicable	Not applicable	1085 kg	Not applicable
Hopper and support with dust container	458 kg	716 kg	984 kg	503 kg	861 kg	1169 kg

ELECTRICAL REQUIREMENTS

Controller: 10-way

Voltage input: AC Version: 105-120V, 200-240V ±10% DC version: 24V

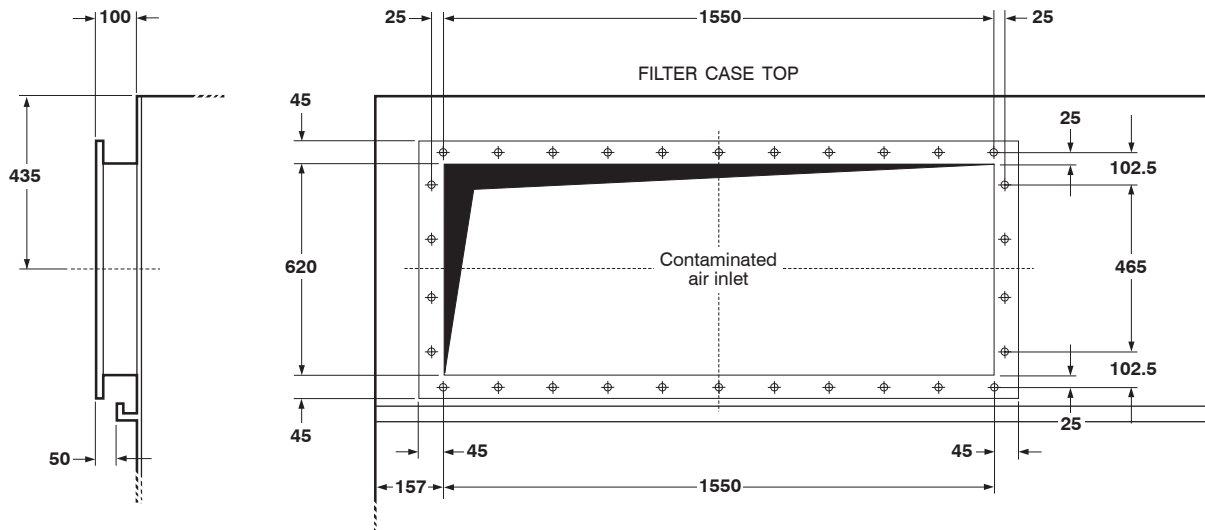


Rear contaminated air inlet and front cleaned air outlet for 2- and 3-tier collectors

All bolt holes $\varnothing 12$ mm for M10 bolts.
Pitch centres: 150 mm.

Rear contaminated air inlet and front cleaned air outlet for 4- to 8-tier collectors

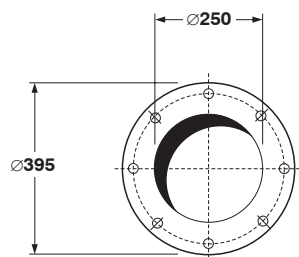
All bolt holes $\varnothing 12$ mm for M10 bolts.
Pitch centres: 150 mm horizontally; 140 mm vertically.



Optional side contaminated air inlet for 4- to 8-tier collectors; 2- and 3-bank either end, 4- to 6-bank both ends

All bolt holes $\varnothing 12$ mm for M10 bolts. Pitch centres: 155 mm except where shown.
NOTE: Consult with Donaldson for suitability.

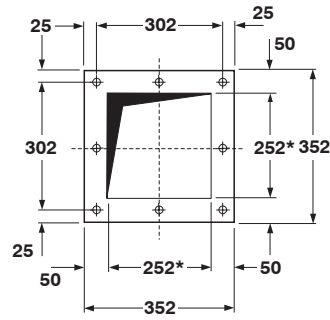
CONTAMINATED AIR INLET AND CLEANED AIR OUTLET CONNECTION DETAILS



Rotary valve flange (for rotary valve supplied by Donaldson)

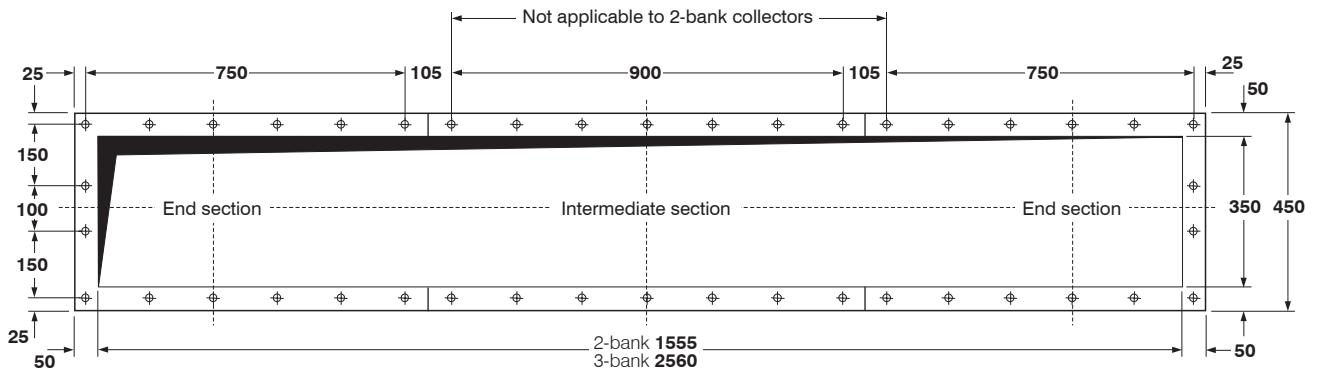
All holes $\varnothing 14$ mm for M12 bolts equally spaced on 350 mm p.c.d.

ROTARY VALVE OUTLET FLANGE DETAILS



Rotary valve hopper and single outlet hopper flange

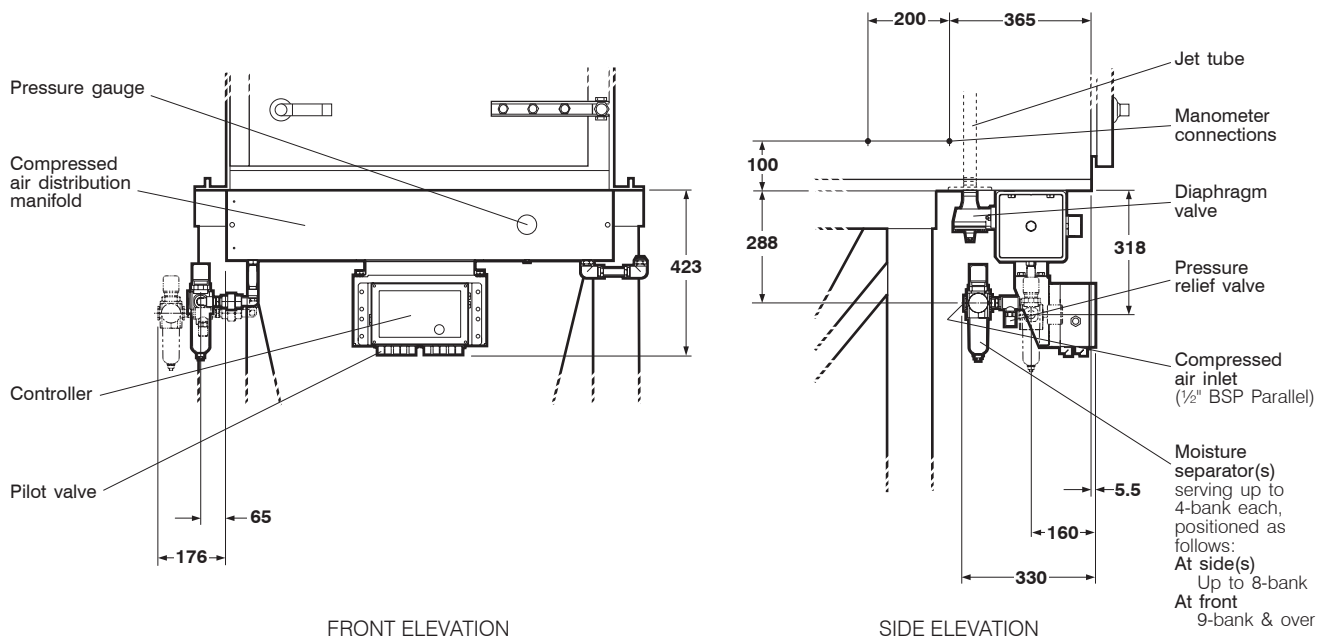
All bolt holes \varnothing 14 mm for M12 bolts. Pitch centres: 151 mm.
 *Inside dimensions of hopper outlet = 240 x 240 mm.



Valley hopper flange

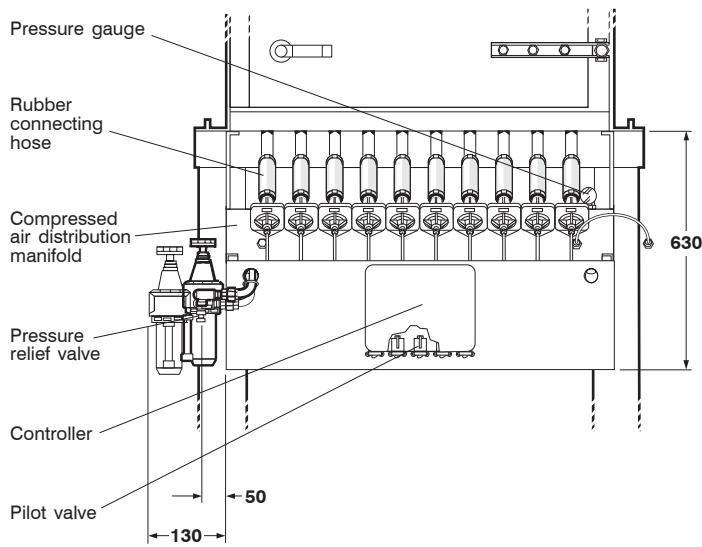
(3-bank illustrated).
 All holes 12 x 20 mm slots, parallel to long edge. Pitch centres: 150 mm except where shown.

HOPPER OUTLET FLANGE DETAILS

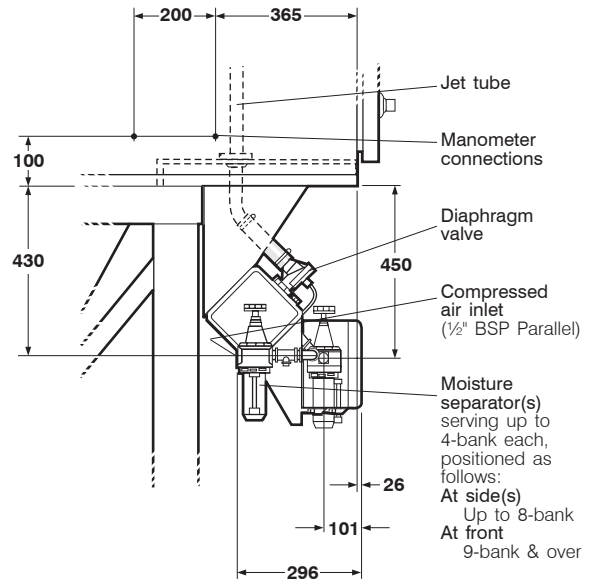


2-, 3-, 4-, 5- and 6-tier collectors (standard temperature)

CONTROL EQUIPMENT DETAILS

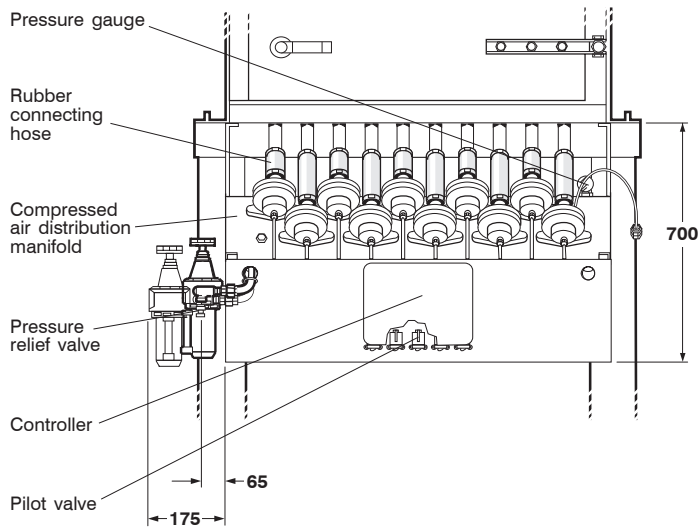


FRONT ELEVATION

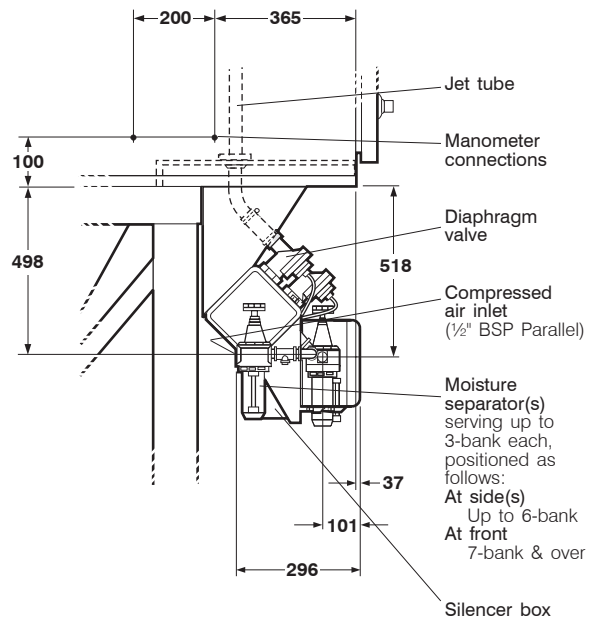


SIDE ELEVATION

2-, 3-, 4-, 5- and 6-tier collectors (high temperature)



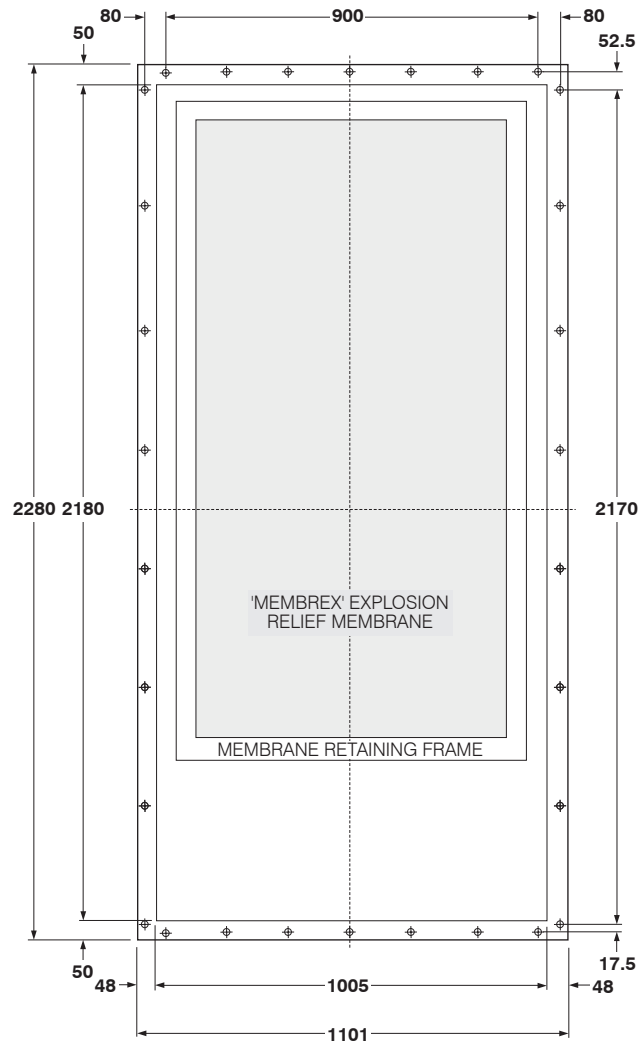
FRONT ELEVATION



SIDE ELEVATION

7- and 8-tier collectors

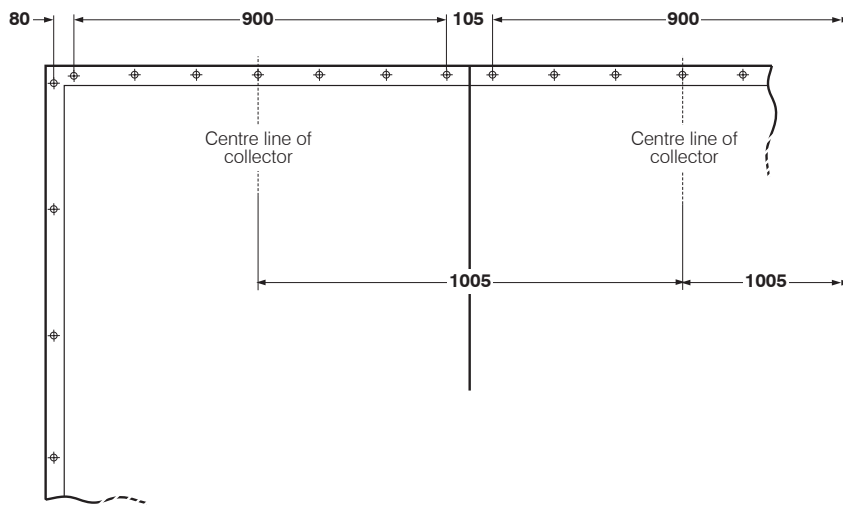
CONTROL EQUIPMENT DETAILS



Top explosion relief flange

All holes 12 x 20 mm slots for M10 bolts. Pitch centres: 150 mm horizontally; 310 mm vertically.
Mounting flange is flush with top of collector.

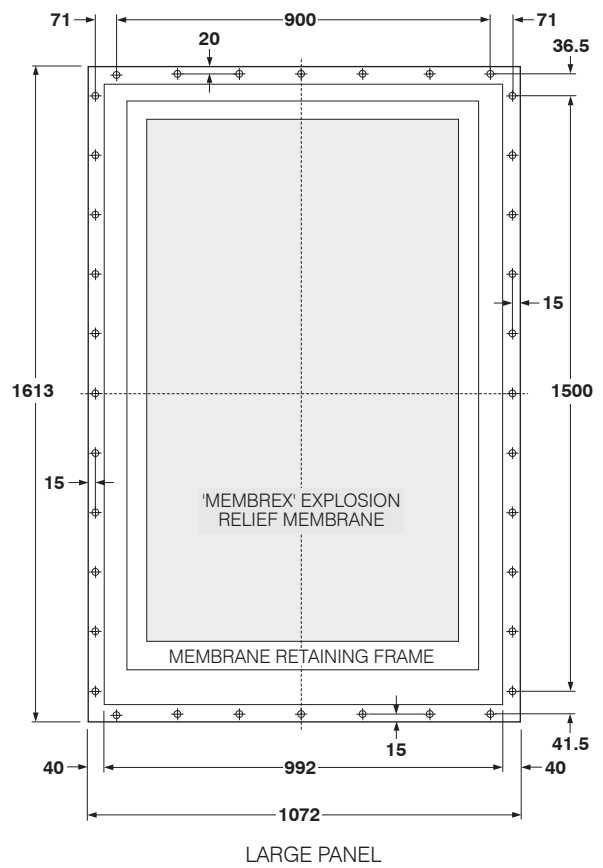
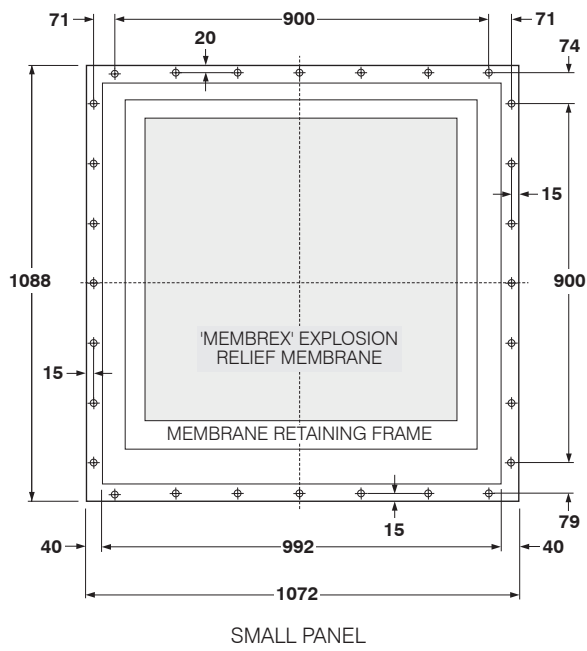
NOTE: Membrane retaining frame projects 80 mm beyond top of collector.



Flange extension for multi-bank collectors

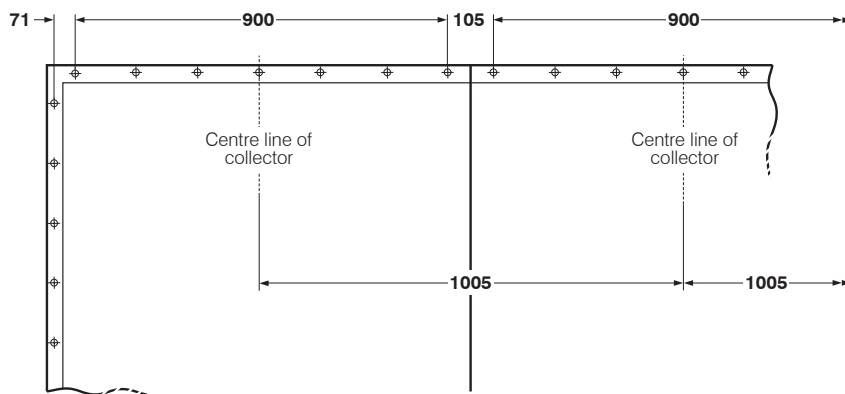
EXPLOSION RELIEF FLANGE MOUNTING DETAILS

Weather protection is available for collectors fitted with top explosion relief.

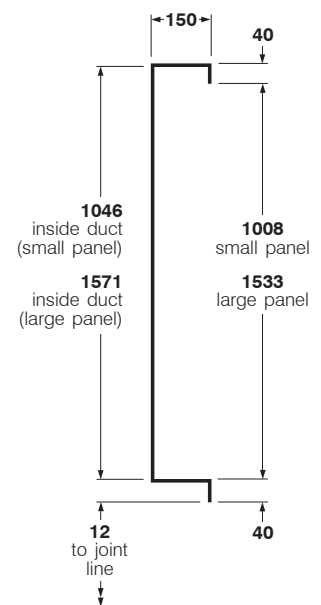


Rear explosion relief flange

Bottom and vertical bolt holes $\varnothing 10$ mm. Top bolt holes 10 x 20 mm slots. All for M8 set screws with pitch centres at 150 mm.
 NOTE: Mounting flange projects 100 mm beyond rear of collector.

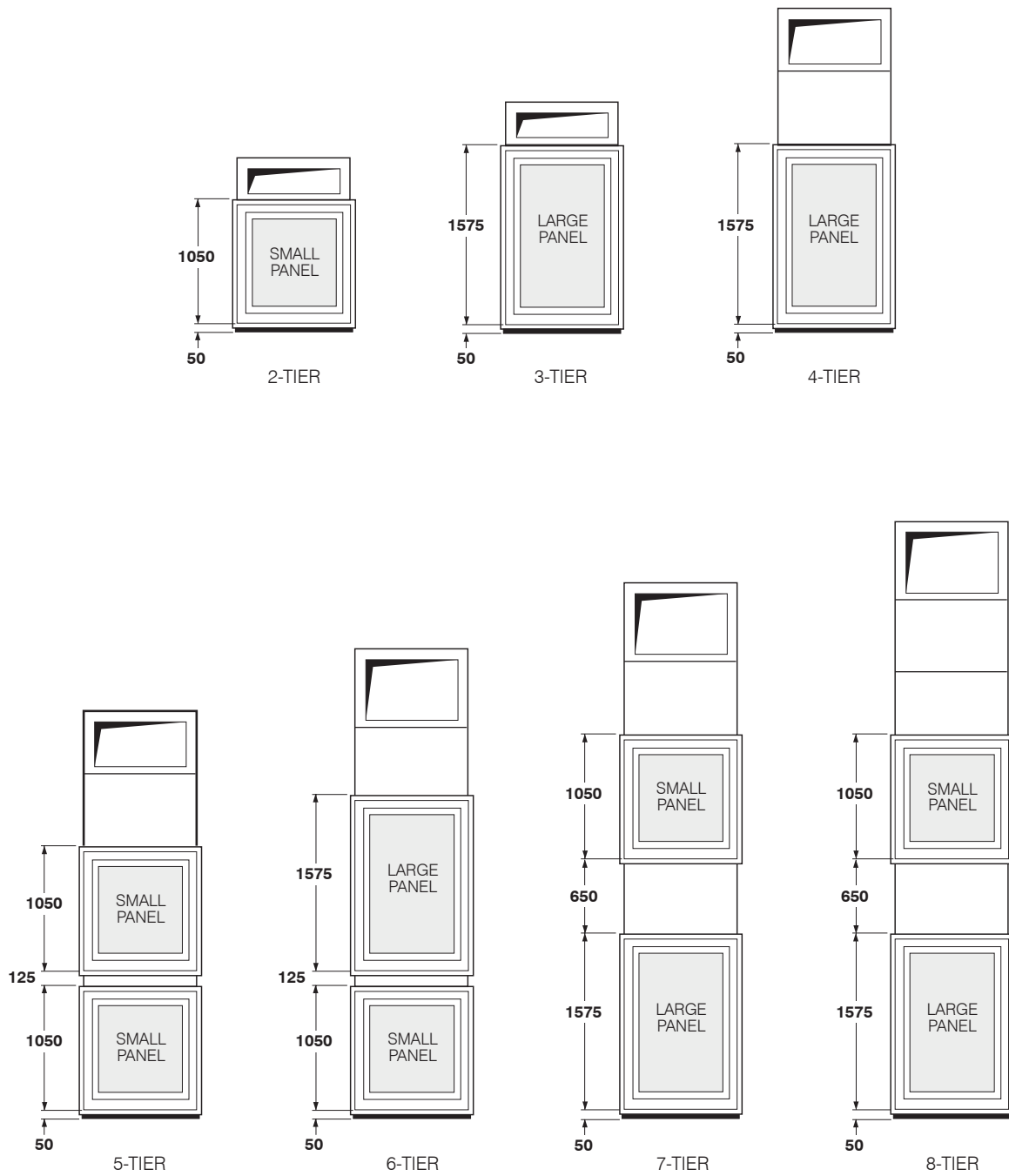


Flange extension for multi-bank collectors



Flange section

EXPLOSION RELIEF FLANGE MOUNTING DETAILS



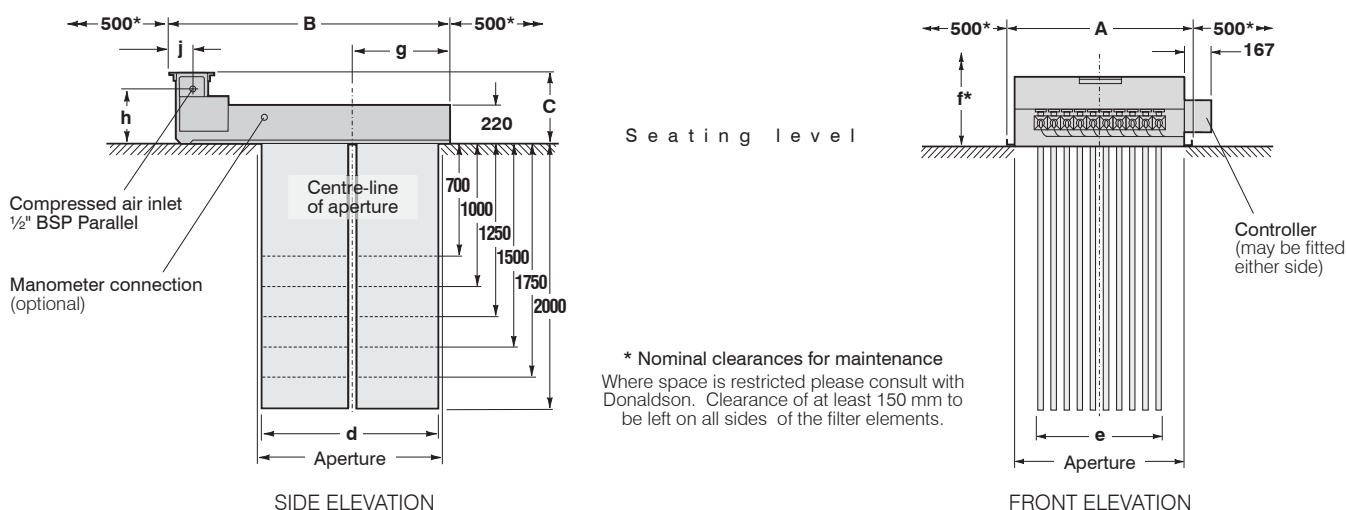
Rear explosion relief location

(1-bank collectors illustrated).

EXPLOSION RELIEF FLANGE MOUNTING DETAILS

Dalamatic Insertable Dust Collectors

Series DLM V



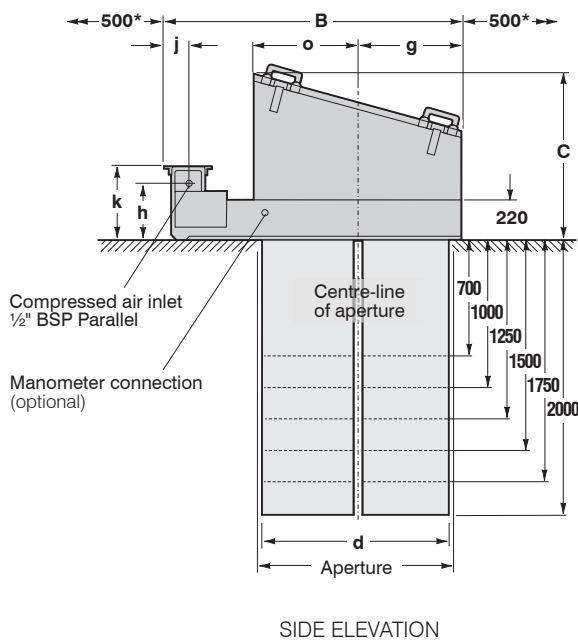
DALAMATIC BASIC TYPE INSERTABLE DUST COLLECTOR

Model DLM V40/20B illustrated, broken lines representing models DLM V14/7B, DLM V20/10B, DLM V25/12B, DLM V30/15B and DLM V35/17B. Suitable for inside locations.

DLM type	Filtration area	Number of elements	A	B	C	DIMENSIONS in mm			g	h	j	Net weight (approx.)
						d	e	f*				
V3/7B	3 m ²	4	524	1015	375	480	294	850	310	295	115	80 kg ‡
V4/7B	4 m ²	6	700	1015	375	480	470	850	310	295	115	105 kg ‡
V5/12B	5 m ²	4	524	1015	375	480	294	1400	310	295	115	90 kg ‡
V6/10B	6 m ²	6	700	1015	375	480	470	1150	310	295	115	114 kg ‡
V7/7B	7 m ²	10	1100	1015	375	480	820	850	310	295	115	160 kg ‡
V7.5/12B	7.5 m ²	6	700	1015	375	480	470	1400	310	295	115	119 kg ‡
V8/7B	8 m ²	12	700	1625	400	1005	470	850	575	310	130	170 kg ‡
V9/15B	9 m ²	6	700	1015	375	480	470	1650	310	295	115	124 kg ‡
V10/10B	10 m ²	10	1100	1015	375	480	820	1150	310	295	115	175 kg ‡
V12/10B	12 m ²	12	700	1625	400	1005	470	1150	575	310	130	188 kg ‡
V13/12B	13 m ²	10	1100	1015	375	480	820	1400	310	295	115	184 kg ‡
V14/7B	14 m ²	20	1100	1625	400	1005	820	850	575	310	130	275 kg ‡
V15/12B	15 m ²	12	700	1625	400	1005	470	1400	575	310	130	198 kg ‡
V15/15B	15 m ²	10	1100	1015	375	480	820	1650	310	295	115	192 kg ‡
V18/15B	18 m ²	12	700	1625	400	1005	470	1650	575	310	130	208 kg ‡
V20/10B	20 m ²	20	1100	1625	400	1005	820	1150	575	310	130	305 kg ‡
V21/7B	21 m ²	30	1100	2225	400	1605	820	850	875	310	130	360 kg ‡
V25/12B	25 m ²	20	1100	1625	400	1005	820	1400	575	310	130	322 kg ‡
V30/10B	30 m ²	30	1100	2225	400	1605	820	1150	875	310	130	405 kg ‡
V30/15B	30 m ²	20	1100	1625	400	1005	820	1650	575	310	130	340 kg ‡
V35/17B	35 m ²	20	1100	1625	400	1005	820	1900	575	310	130	362 kg ‡
V38/12B	38 m ²	30	1100	2225	400	1605	820	1400	875	310	130	430 kg ‡
V40/20B	40 m ²	20	1100	1625	400	1005	820	2150	575	310	130	379 kg ‡
V45/15B	45 m ²	30	1100	2225	400	1605	820	1650	875	310	130	455 kg ‡
V50/12B	50 m ²	40	1100	2747	400	2130	820	1400	1137	310	130	564 kg ‡
V52/17B	52 m ²	30	1100	2225	400	1605	820	1900	875	310	130	485 kg ‡
V60/15B	60 m ²	40	1100	2747	400	2130	820	1650	1137	310	130	600 kg ‡
V60/20B	60 m ²	30	1100	2225	400	1605	820	2150	875	310	130	510 kg ‡
V70/17B	70 m ²	40	1100	2747	400	2130	820	1900	1137	310	130	643 kg ‡
V80/20B	80 m ²	40	1100	2747	400	2130	820	2150	1137	310	130	677 kg ‡

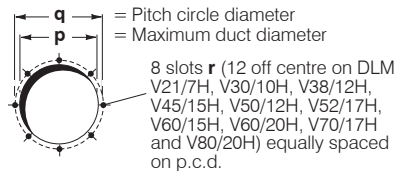
‡ Indicates heaviest configuration.

Dalamic Insertable Dust Collectors – Series DLM V

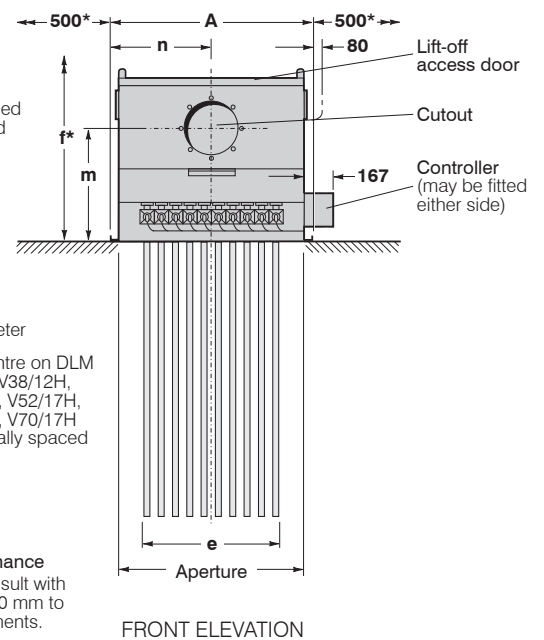


Note: The DLM V50/12H, V60/15H, V70/17H and V80/20H are each supplied with a flat-topped header and hinged access doors.

Seating level



* Nominal clearances for maintenance
 Where space is restricted please consult with Donaldson. Clearance of at least 150 mm to be left on all sides of the filter elements.



DALAMATIC INSERTABLE DUST COLLECTOR WITH EXIT HEADER

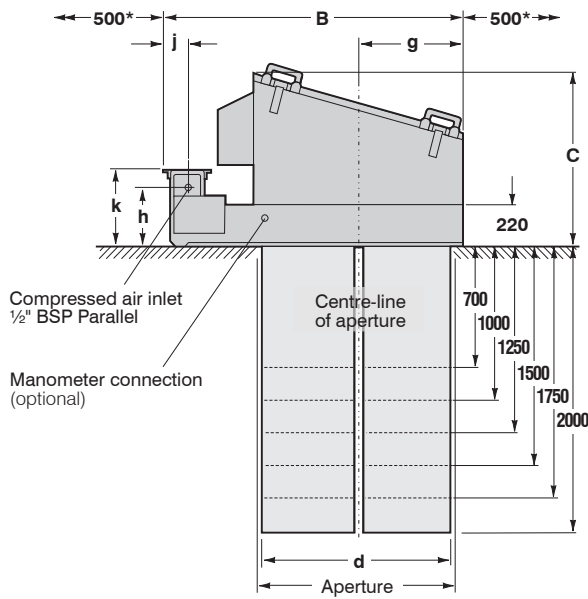
Model DLM V40/20H illustrated, broken lines representing models DLM V14/7H, DLM V20/10H, DLM V25/12H, DLM V30/15H and DLM V35/17H. Suitable for inside and outside locations.

DLM type	Filtration area	Number of elements	A	B	C	d	e	f*	g	h	j	k	m	n	o	p	q	r	Net weight (approx.)
V3/7H	3 m ²	4	524	1015	935	480	294	1250	310	295	115	375	552	227	295	220	245	8 x 12	115 kg ‡
V4/7H	4 m ²	6	700	1015	935	480	470	1250	310	295	115	375	552	350	295	220	245	8 x 12	145 kg ‡
V5/12H	5 m ²	4	524	1015	935	480	294	1800	310	295	115	375	552	227	295	220	245	8 x 12	145 kg ‡
V6/10H	6 m ²	6	700	1015	935	480	470	1550	310	295	115	375	552	350	295	220	245	8 x 12	154 kg ‡
V7/7H	7 m ²	10	1100	1015	935	480	820	1250	310	295	115	375	562	550	295	285	310	10 x 20	215 kg ‡
V7.5/12H	7.5 m ²	6	700	1015	935	480	470	1800	310	295	115	375	552	350	295	220	245	8 x 12	159 kg ‡
V8/7H	8 m ²	12	700	1625	935	1005	470	1250	575	310	130	400	592	290	555	285	310	10 x 20	235 kg ‡
V9/15H	9 m ²	6	700	1015	935	480	470	2050	310	295	115	375	562	290	295	285	310	10 x 20	164 kg ‡
V10/10H	10 m ²	10	1100	1015	935	480	820	1550	310	295	115	375	562	550	295	285	310	10 x 20	230 kg ‡
V12/10H	12 m ²	12	700	1625	935	1005	470	1550	575	310	130	400	610	290	555	285	310	10 x 20	253 kg ‡
V13/12H	13 m ²	10	1100	1015	935	480	820	1800	310	295	115	375	562	550	295	285	310	10 x 20	239 kg ‡
V14/7H	14 m ²	20	1100	1625	935	1005	820	1250	575	310	130	400	610	550	555	285	310	10 x 20	360 kg ‡
V15/12H	15 m ²	12	700	1625	935	1005	470	1800	575	310	130	400	610	290	555	285	310	10 x 20	263 kg ‡
V15/15H	15 m ²	10	1100	1015	935	480	820	2050	310	295	115	375	580	550	295	285	310	10 x 20	247 kg ‡
V18/15H	18 m ²	12	700	1625	935	1005	470	2050	575	310	130	400	610	290	555	285	310	10 x 20	273 kg ‡
V20/10H	20 m ²	20	1100	1625	935	1005	820	1550	575	310	130	400	610	550	555	285	310	10 x 20	390 kg ‡
V21/7H	21 m ²	30	1100	2225	1090	1605	820	1150	875	310	130	400	670	550	855	500	550	10 x 20	480 kg ‡
V25/12H	25 m ²	20	1100	1625	935	1005	820	1800	575	310	130	400	610	550	555	285	310	10 x 20	407 kg ‡
V30/10H	30 m ²	30	1100	2225	1090	1605	820	1450	875	310	130	400	670	550	855	500	550	10 x 20	525 kg ‡
V30/15H	30 m ²	20	1100	1625	935	1005	820	2050	575	310	130	400	610	550	285	315	340	10 x 20	424 kg ‡
V35/17H	35 m ²	20	1100	1625	935	1005	820	2300	575	310	130	400	610	550	555	315	340	10 x 20	432 kg ‡
V38/12H	38 m ²	30	1100	2225	1090	1605	820	1700	875	310	130	400	670	550	855	500	550	∅12	550 kg ‡
V40/20H	40 m ²	20	1100	1625	935	1005	820	2550	575	310	130	400	610	550	555	315	340	10 x 20	449 kg ‡
V45/15H	45 m ²	30	1100	2225	1090	1605	820	1950	875	310	130	400	670	550	855	500	550	∅12	575 kg ‡
V50/12H	50 m ²	40	1100	2747	1090	2130	820	1960	1137	310	130	400	670	550	1118	500	550	∅12	819 kg ‡
V52/17H	52 m ²	30	1100	2225	1090	1605	820	2200	875	310	130	400	670	550	855	500	550	∅12	585 kg ‡
V60/15H	60 m ²	40	1100	2747	1090	2130	820	2210	1137	310	130	400	670	550	1118	500	550	∅12	852 kg ‡
V60/20H	60 m ²	30	1100	2225	1090	1605	820	2450	875	310	130	400	670	550	855	500	550	∅12	610 kg ‡
V70/17H	70 m ²	40	1100	2747	1090	2130	820	2460	1137	310	130	400	670	550	1088	500	550	∅12	848 kg ‡
V80/20H	80 m ²	40	1100	2747	1090	2130	820	2710	1137	310	130	400	670	550	1088	500	550	∅12	882 kg ‡

‡ Indicates heaviest configuration.

Data Sheet

Dalamic Insertable Dust Collectors – Series DLM V

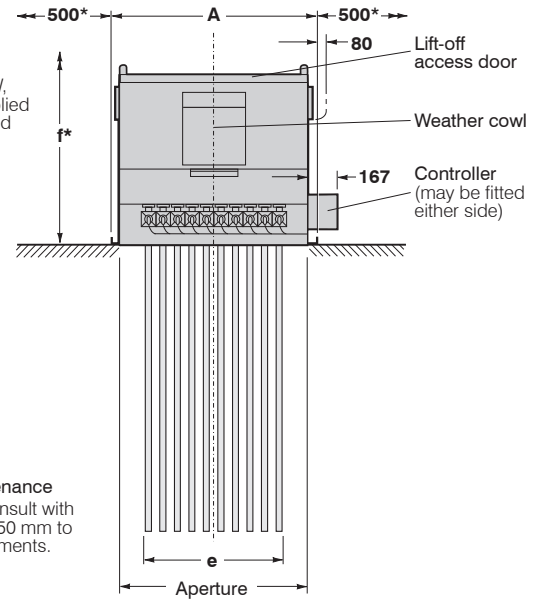


SIDE ELEVATION

Note: The DLM V50/12W, V60/15W, V70/17W and V80/20W are each supplied with a flat-topped header and hinged access doors.

Seating level

* Nominal clearances for maintenance
Where space is restricted please consult with Donaldson. Clearance of at least 150 mm to be left on all sides of the filter elements.



FRONT ELEVATION

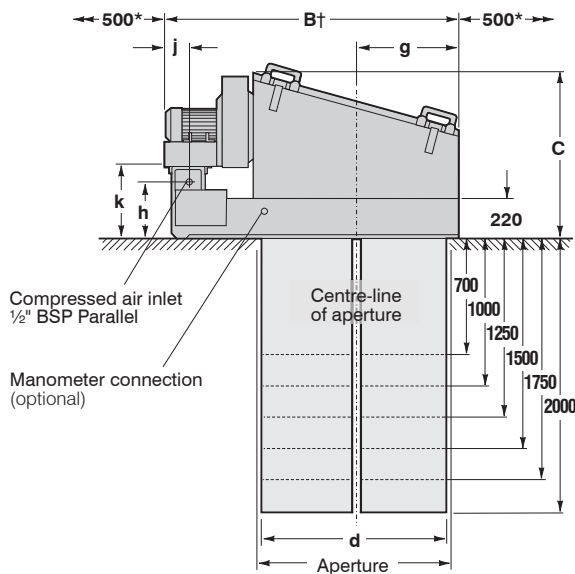
DALAMATIC INSERTABLE DUST COLLECTOR WITH WEATHER COWL

Model DLM V40/20W illustrated, broken lines representing models DLM V14/7W, DLM V20/10W, DLM V25/12W, DLM V30/15W and DLM V35/17W.
Suitable for inside and outside locations.

DLM type	Filtration area	Number of elements	DIMENSIONS in mm										Net weight (approx.)
			A	B	C	d	e	f*	g	h	j	k	
V3/7W	3 m ²	4	524	1015	935	480	294	1250	310	295	115	375	118 kg ‡
V4/7W	4 m ²	6	700	1015	935	480	470	1250	310	295	115	375	150 kg ‡
V5/12W	5 m ²	4	524	1015	935	480	294	1800	310	295	115	375	128 kg ‡
V6/10W	6 m ²	6	700	1015	935	480	470	1550	310	295	115	375	159 kg ‡
V7/7W	7 m ²	10	1100	1015	935	480	820	1250	310	295	115	375	160 kg ‡
V7.5/12W	7.5 m ²	6	700	1015	935	480	470	1800	310	295	115	375	164 kg ‡
V8/7W	8 m ²	12	700	1625	935	1005	470	1250	575	310	130	400	240 kg ‡
V9/15W	9 m ²	6	700	1015	935	480	470	2050	310	295	115	375	169 kg ‡
V10/10W	10 m ²	10	1100	1015	935	480	820	1550	310	295	115	375	230 kg ‡
V12/10W	12 m ²	12	700	1625	935	1005	470	1550	575	310	130	400	258 kg ‡
V13/12W	13 m ²	10	1100	1015	935	480	820	1800	310	295	115	375	244 kg ‡
V14/7W	14 m ²	20	1100	1625	935	1005	820	1250	575	310	130	400	365 kg ‡
V15/12W	15 m ²	12	700	1625	935	1005	470	1800	575	310	130	400	268 kg ‡
V15/15W	15 m ²	10	1100	1015	935	480	820	2050	310	295	115	375	252 kg ‡
V18/15W	18 m ²	12	700	1625	935	1005	470	2050	575	310	130	400	278 kg ‡
V20/10W	20 m ²	20	1100	1625	935	1005	820	1550	575	310	130	400	395 kg ‡
V21/7W	21 m ²	30	1100	2225	1090	1605	820	1150	875	310	130	400	490 kg ‡
V25/12W	25 m ²	20	1100	1625	935	1005	820	1800	575	310	130	400	412 kg ‡
V30/10W	30 m ²	30	1100	2225	1090	1605	820	1450	875	310	130	400	535 kg ‡
V30/15W	30 m ²	20	1100	1625	935	1005	820	2050	575	310	130	400	429 kg ‡
V35/17W	35 m ²	30	1100	1625	935	1005	820	2300	575	310	130	400	437 kg ‡
V38/12W	38 m ²	30	1100	2225	1090	1605	820	1700	875	310	130	400	560 kg ‡
V40/20W	40 m ²	20	1100	1625	935	1005	820	2550	575	310	130	400	454 kg ‡
V45/15W	45 m ²	30	1100	2225	1090	1605	820	1950	875	310	130	400	585 kg ‡
V50/12W	50 m ²	40	1100	2747	1090	2130	820	1960	1137	310	130	400	829 kg ‡
V52/17W	52 m ²	30	1100	2225	1090	1605	820	2200	875	310	130	400	595 kg ‡
V60/15W	60 m ²	40	1100	2747	1090	2130	820	2210	1137	310	130	400	862 kg ‡
V60/20W	60 m ²	30	1100	2225	1090	1605	820	2450	875	310	130	400	620 kg ‡
V70/17W	70 m ²	40	1100	2747	1090	2130	820	2460	1137	310	130	400	858 kg ‡
V80/20W	80 m ²	40	1100	2747	1090	2130	820	2710	1137	310	130	400	892 kg ‡

‡ Indicates heaviest configuration.

Dalamic Insertable Dust Collectors – Series DLM V



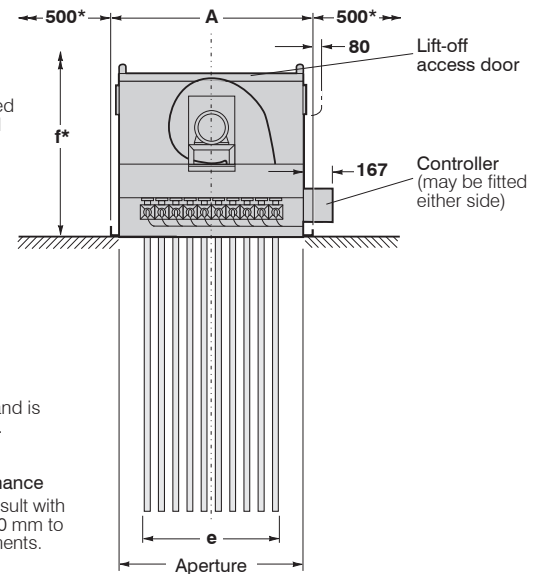
SIDE ELEVATION

Note: The DLM V50/12F, V60/15F, V70/17F and V80/20F are each supplied with a flat-topped header and hinged access doors.

Seating level

† This dimension is approximate and is dependent on make of motor.

* Nominal clearances for maintenance
Where space is restricted please consult with Donaldson. Clearance of at least 150 mm to be left on all sides of the filter elements.



FRONT ELEVATION

DALAMATIC INSERTABLE DUST COLLECTOR WITH INTEGRAL FAN

Model DLM V40/20F illustrated, broken lines representing models DLM V14/7F, DLM V20/10F, DLM V25/12F, DLM V30/15F and DLM V35/17F. Suitable for inside and outside locations.

DLM type	Filtration area	Number of elements	DIMENSIONS in mm										Fan	Fan motor	Net weight (approx.)
			A	B†	C	d	e	f*	g	h	j	k			
V3/7F	3 m ²	4	524	1095	935	480	294	1250	310	295	195	375	F1	0.75 kW	165 kg ‡
V4/7F	4 m ²	6	700	1095	935	480	470	1250	310	295	195	375	F1	0.75 kW	195 kg ‡
													K3	1.50 kW	200 kg ‡
													K5	2.20 kW	215 kg ‡
V5/12F	5 m ²	4	524	1095	935	480	294	1800	310	295	195	375	F1	0.75 kW	175 kg ‡
V6/10F	6 m ²	6	700	1095	935	480	470	1550	310	295	195	375	F1	0.75 kW	204 kg ‡
													K3	1.50 kW	209 kg ‡
													K5	2.20 kW	224 kg ‡
V7/7F	7 m ²	10	1100	1095	935	480	820	1250	310	295	195	375	F1	0.75 kW	265 kg ‡
													K3	1.50 kW	270 kg ‡
													K5	2.20 kW	285 kg ‡
V7.5/12F	7.5 m ²	6	700	1095	935	480	470	1800	310	295	195	375	F1	0.75 kW	209 kg ‡
													K3	1.50 kW	214 kg ‡
													K5	2.20 kW	229 kg ‡
V8/7F	8 m ²	12	700	1625	935	1005	470	1250	575	310	130	400	F1	0.75 kW	285 kg ‡
													K3	1.50 kW	290 kg ‡
V9/15F	9 m ²	6	700	1095	935	480	470	2050	310	295	195	375	F1	0.75 kW	214 kg ‡
													K3	1.50 kW	219 kg ‡
													K5	2.20 kW	234 kg ‡
V10/10F	10 m ²	10	1100	1095	935	480	820	1550	310	295	195	375	F1	0.75 kW	280 kg ‡
													K3	1.50 kW	285 kg ‡
													K5	2.20 kW	300 kg ‡
V12/10F	12 m ²	12	700	1625	935	1005	470	1550	575	310	130	400	F1	0.75 kW	303 kg ‡
													K3	1.50 kW	308 kg ‡
													K5	2.20 kW	323 kg ‡
													K7	3.00 kW	348 kg ‡
V13/12F	13 m ²	10	1100	1095	935	480	820	1800	310	295	195	375	F1	0.75 kW	289 kg ‡
													K3	1.50 kW	294 kg ‡
													K5	2.20 kW	309 kg ‡
V14/7F	14 m ²	20	1100	1625	935	1005	820	1250	575	310	130	400	K3	1.50 kW	415 kg ‡
													K5	2.20 kW	430 kg ‡
													K7	3.00 kW	455 kg ‡
V15/12F	15 m ²	12	700	1625	935	1005	470	1800	575	310	130	400	K3	1.50 kW	318 kg ‡
													K5	2.20 kW	333 kg ‡
													K7	3.00 kW	358 kg ‡

‡ Indicates heaviest configuration.

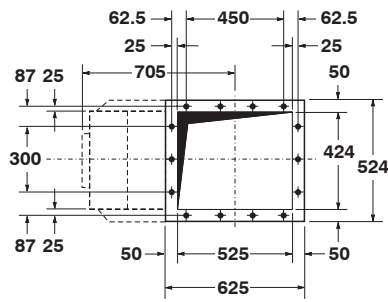
Data Sheet

Dalamic Insertable Dust Collectors – Series DLM V

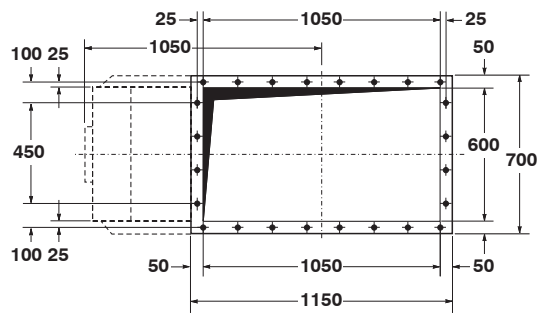
DLM type	Filtration area	Number of elements	DIMENSIONS in mm										Fan	Fan motor	Net weight (approx.)
			A	B†	C	d	e	f*	g	h	j	k			
V15/15F	15 m ²	10	1100	1015	935	480	820	2050	310	295	115	375	F1	0.75 kW	297 kg ‡
													K3	1.50 kW	302 kg ‡
													K5	2.20 kW	317 kg ‡
V18/15F	18 m ²	12	700	1625	935	1005	470	2050	575	310	130	400	K3	1.50 kW	328 kg ‡
													K5	2.20 kW	343 kg ‡
													K7	3.00 kW	378 kg ‡
V20/10F	20 m ²	20	1100	1625	935	1005	820	1550	575	310	130	400	K3	1.50 kW	445 kg ‡
													K5	2.20 kW	460 kg ‡
													K7	3.00 kW	495 kg ‡
													K10	5.50 kW	525 kg ‡
V21/7F	21 m ²	30	1100	2225	1090	1605	820	1150	875	310	130	400	K3	1.50 kW	535 kg ‡
													K5	2.20 kW	550 kg ‡
													K7	3.00 kW	585 kg ‡
V25/12F	25 m ²	20	1100	1625	935	1005	820	1800	575	310	130	400	K3	1.50 kW	462 kg ‡
													K5	2.20 kW	477 kg ‡
													K7	3.00 kW	492 kg ‡
													K10	5.50 kW	582 kg ‡
													K11	7.50 kW	642 kg ‡
V30/10F	30 m ²	30	1100	2225	1090	1605	820	1450	875	310	130	400	K5	2.20 kW	595 kg ‡
													K7	3.00 kW	630 kg ‡
													K10	5.50 kW	708 kg ‡
													K11	7.50 kW	768 kg ‡
V30/15F	30 m ²	20	1100	1625	935	1005	820	2050	575	310	130	400	K3	1.50 kW	479 kg ‡
													K5	2.20 kW	494 kg ‡
													K7	3.00 kW	530 kg ‡
													K10	5.50 kW	599 kg ‡
													K11	7.50 kW	659 kg ‡
V35/17F	35 m ²	20	1100	1625	935	1005	820	2300	575	310	130	400	K3	1.50 kW	487 kg ‡
													K5	2.20 kW	502 kg ‡
													K7	3.00 kW	537 kg ‡
													K10	5.50 kW	567 kg ‡
													K11	7.50 kW	627 kg ‡
V38/12F	38 m ²	30	1100	2225	1090	1605	820	1700	875	310	130	400	K5	2.20 kW	630 kg ‡
													K7	3.00 kW	655 kg ‡
													K10	5.50 kW	733 kg ‡
													K11	7.50 kW	773 kg ‡
V40/20F	40 m ²	20	1100	1625	935	1005	820	2550	575	310	130	400	K3	1.50 kW	504 kg ‡
													K5	2.20 kW	519 kg ‡
													K7	3.00 kW	554 kg ‡
													K10	5.50 kW	584 kg ‡
													K11	7.50 kW	644 kg ‡
V45/15F	45 m ²	30	1100	2225	1090	1605	820	1950	875	310	130	400	K5	2.20 kW	655 kg ‡
													K7	3.00 kW	680 kg ‡
													K10	5.50 kW	758 kg ‡
													K11	7.50 kW	798 kg ‡
V50/12F	50 m ²	40	1100	2890	1090	2130	820	1960	1137	310	270	400	K10	5.50 kW	984 kg ‡
													K11	7.50 kW	1044 kg ‡
													K15	11.00 kW	1102 kg ‡
V52/17F	52 m ²	30	1100	2225	1090	1605	820	2200	875	310	130	400	K5	2.20 kW	665 kg ‡
													K7	3.00 kW	690 kg ‡
													K10	5.50 kW	768 kg ‡
													K11	7.50 kW	808 kg ‡
V60/15F	60 m ²	40	1100	2890	1090	2130	820	2210	1137	310	270	400	K10	5.50 kW	1017 kg ‡
													K11	7.50 kW	1077 kg ‡
													K15	11.00 kW	1135 kg ‡
V60/20F	60 m ²	30	1100	2225	1090	1605	820	2450	875	310	130	400	K5	2.20 kW	690 kg ‡
													K7	3.00 kW	715 kg ‡
													K10	5.50 kW	793 kg ‡
													K11	7.50 kW	833 kg ‡
V70/17F	70 m ²	40	1100	2890	1090	2130	820	2460	1137	310	270	400	K10	5.50 kW	1013 kg ‡
													K11	7.50 kW	1073 kg ‡
													K15	11.00 kW	1131 kg ‡
V80/20F	80 m ²	40	1100	2890	1090	2130	820	2710	1137	310	270	400	K10	5.50 kW	1047 kg ‡
													K11	7.50 kW	1107 kg ‡
													K15	11.00 kW	1165 kg ‡

‡ Indicates heaviest configuration.

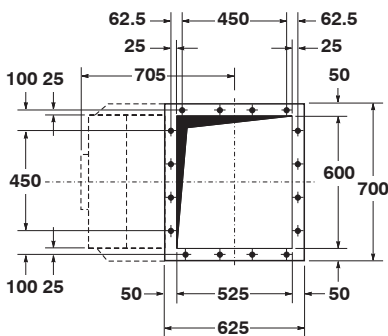
Dalamatic Insertable Dust Collectors – Series DLM V



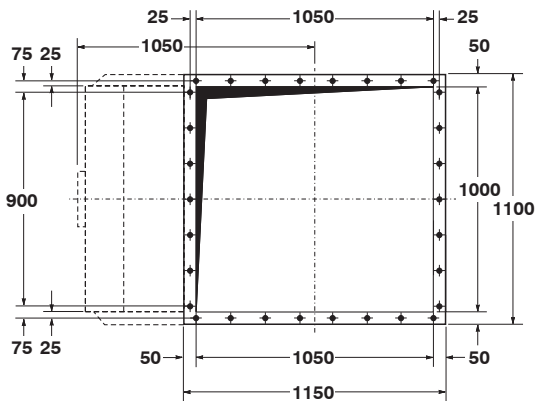
DLM V3/7 AND V5/12



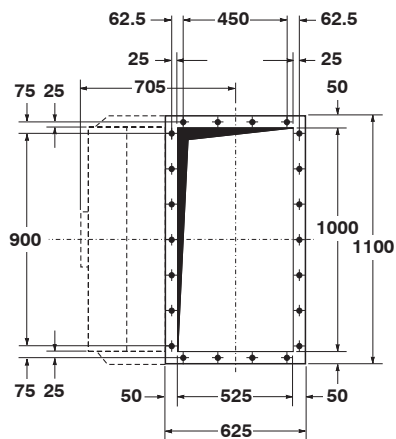
DLM V8/7, V12/10, V15/12 AND V18/15



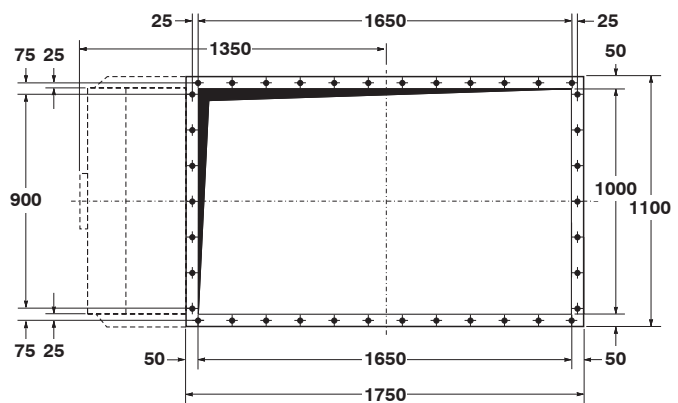
DLM V4/7, V6/10, V7.5/12 AND V9/15



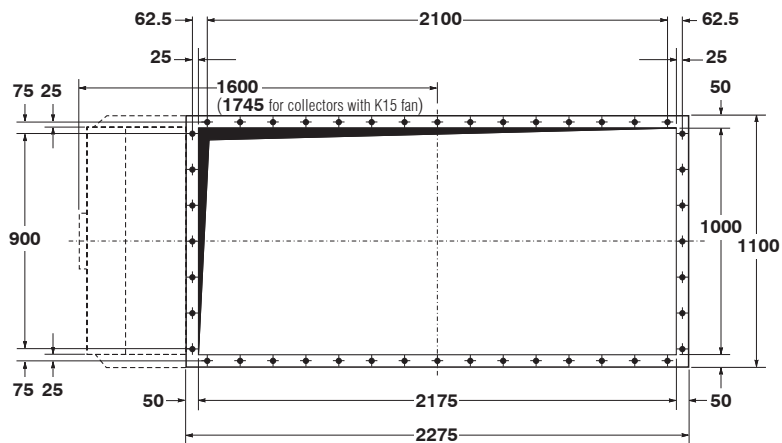
DLM V14/7, V20/10, V25/12, V30/15, V35/17 AND V40/20



DLM V7/7, V10/10, V13/12 AND V15/15



DLM V21/7, V30/10, V38/12, V45/15, V52/17 AND V60/20



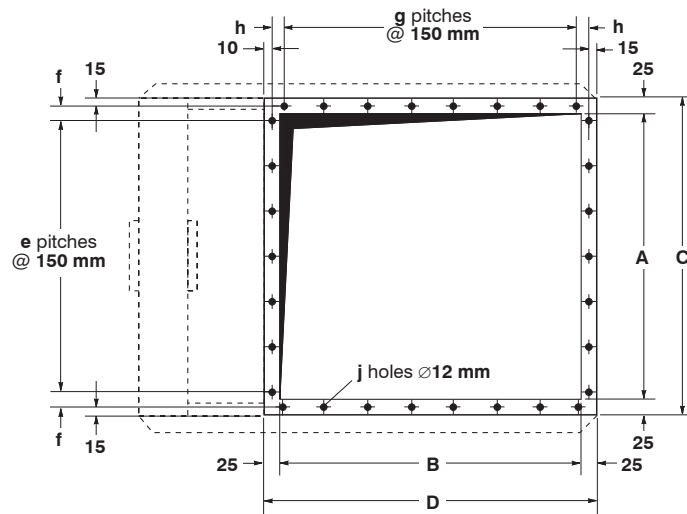
DLM V50/12, V60/15, V70/17 AND V80/20

APERTURE AND MOUNTING FLANGE DETAILS FOR TYPES B, W, H AND F COLLECTORS

All bolt holes $\varnothing 12$ mm for M10 set screws. Pitch centres: 150 mm.

Data Sheet

Dalamatic Insertable Dust Collectors – Series DLM V



EXIT HEADER MOUNTING FLANGE DETAILS

Mounting flange for DLM V14/7B, V20/10B, V25/12B, V30/15B, V35/17 and V40/20 illustrated.

DLM type	A	B	C	D	e	f	g	h	j
V3/7B and V5/12B	378 mm	550 mm	428 mm	600 mm	2	49 mm	3	62.5 mm	14
V4/7B, V6/10B, V7.5/12B and V9/15B	554 mm	550 mm	604 mm	600 mm	3	62 mm	3	62.5 mm	16
V7/7B, V10/10B, V13/12B and V15/15B	954 mm	550 mm	1004 mm	600 mm	6	37 mm	3	62.5 mm	22
V8/7B, V12/10B, V15/12B and V18/15B	554 mm	1075 mm	604 mm	1125 mm	3	62 mm	7	25 mm	24
V14/7B, V20/10B, V25/12B, V30/15B, V35/17 and V40/20	954 mm	1075 mm	1004 mm	1125 mm	6	37 mm	7	25 mm	30
V21/7B, V30/10B, V38/12B, V45/15B, V52/17 and V60/20	954 mm	1675 mm	1004 mm	1725 mm	6	37 mm	11	25 mm	38
V50/12B, V60/15B, V70/17 and V80/20	954 mm	2200 mm	1004 mm	2250 mm	6	37 mm	14	62.5 mm	44

ELECTRICAL REQUIREMENTS

Collectors up to DLM V20/10*: 2-, 3- or 5-way controller

Collectors from DLM V20/10* upwards: 10-way controller

Controller voltage input: AC version: 105-120V, 200-240V, ($\pm 10\%$)
DC version: 24V

Fan motor (if fitted): To suit local voltage

* The DLM V20/10 can be supplied with either 5- or 10-way controller

DESIGN LIMITS (standard equipment)

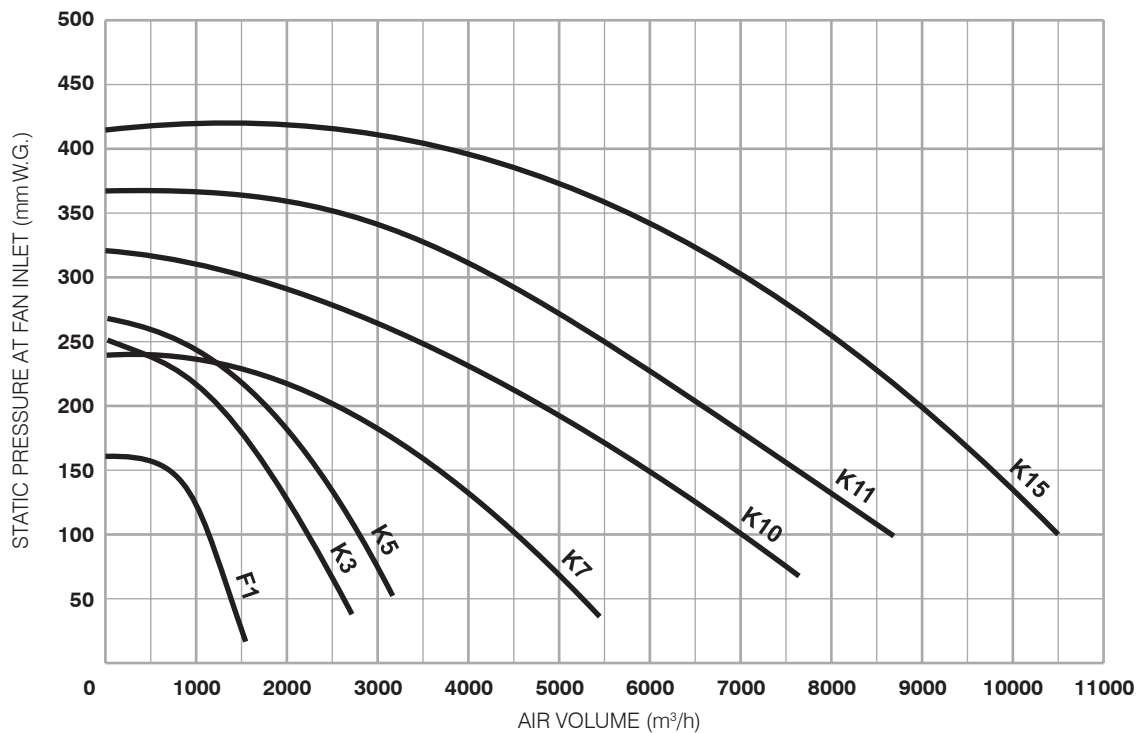
Temperature range (alternatives according to type of sealer used): (1) -10° to $+60^{\circ}\text{C}$; (2) -10° to $+200^{\circ}\text{C}$ (not type F)

Pressure limits: (a) Types B, W and H: -400 mmW.G. (For positive pressures please refer to Donaldson)
(b) Type S: -3000 mmW.G. (For positive pressures please refer to Donaldson)
(c) Type F: as fan performance curves from shut-off to operating pressure

Dimension tolerances: ± 5 mm on main dimensions; ± 2 mm on detail dimensions

Equipment is available suitable for use in a potentially explosive atmosphere (Directive 94/9/EC) satisfying the requirements for group II category 2G or 2D and 3G or 3D T135°C

Dalamic Insertable Dust Collectors – Series DLM V



FAN PERFORMANCE CURVES

FAN SELECTION

To select the most suitable fan for a given application:

- 1 Determine the air volume (m³/h) needed to give effective venting and dust control.
- 2 Estimate pressure or suction (mm W.G.) in the housing in which the dust collector is inserted.
- 3 Assess the operational pressure drop (mm W.G.) across the clean side and dirty side of the filtering elements – usually between 25 to 100 mm W.G.
- 4 The sum of 2 and 3 gives the pressure (mm W.G.) required for fan selection purposes.
- 5 Consult graph for fan performances available.

NOISE LEVELS

Machinery noise levels are an important consideration in the design and selection of new equipment. Several EC Directives and National Laws/Regulations adopting these directives make reference to airborne noise emissions. Actions that employers are required to comply with if employees are subjected to a daily personal noise exposure $L_{ep,d}$ of 80 dB(A) or more are also specified.

WEIGHTED SOUND PRESSURE LEVELS

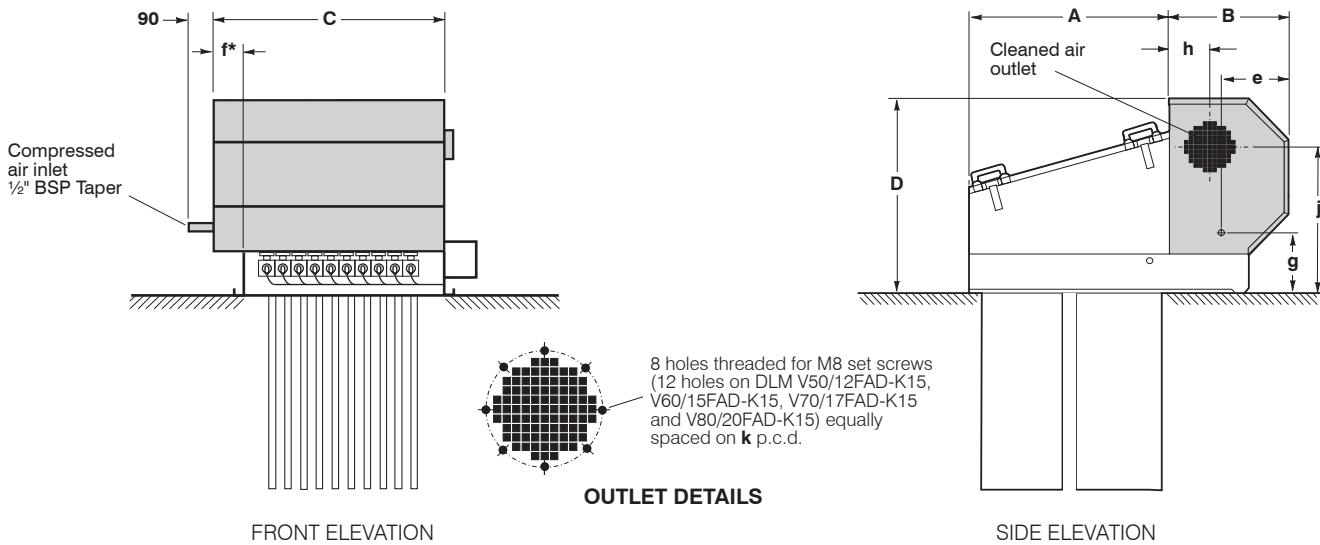
All readings were taken in normal industrial areas, i.e. semi-reverberant surroundings, with local equipment silent. Measurements were taken at maximum air flow conditions at 1.0 metre radius from the equipment housing and 1.6 metres above base level, using a precision sound level meter and octave filter.

	F1 (0.75 kW)	K3 (1.5 kW)	K5 (2.2 kW)	K7 (3.0 kW)	K10 (5.5 kW)	K11 (7.5 kW)	K15 (11.0 kW)
With acoustic diffuser	76 dB(A)	73 dB(A)	74 dB(A)	76 dB(A)	79 dB(A)*	84 dB(A)	85 dB(A)
Without acoustic diffuser	91 dB(A)	89 dB(A)	92 dB(A)	93 dB(A)	94 dB(A)	97 dB(A)	99 dB(A)

Noise levels of installed equipment may vary due to site conditions. *Estimated data.

Data Sheet

Dalamatic Insertable Dust Collectors – Series DLM V



DALAMATIC INSERTABLE ACOUSTIC DIFFUSER DETAILS

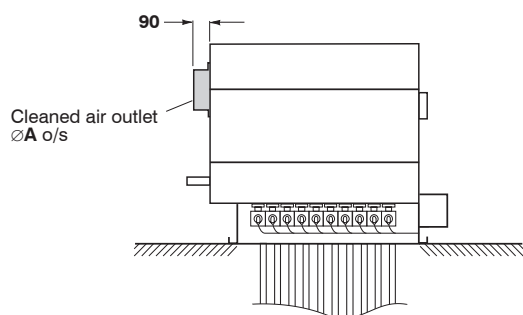
Suitable for inside and outside locations.

Nominal clearances for maintenance are as shown on page 4.

* Note: On models DLM V4/7FAD, V6/10FAD, V7.5/12FAD, V8/7FAD, V9/15FAD, V12/10FAD, V15/12FAD and V18/15FAD the acoustic diffuser overhangs on the left and the controller is on the right (as illustrated). On models DLM V50/12FAD-K15, V60/15FAD-K15, V70/17FAD-K15 and V80/20FAD-K15 the overhang is on the right and the controller is on the left. On all other models there is no overhang and the controller can be fitted on either side. In all cases the compressed air inlet pipe is on the opposite side to the controller.

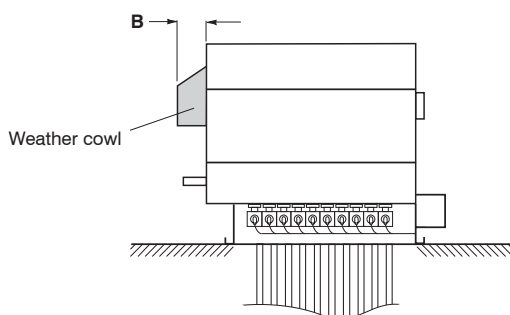
DLM type	DIMENSIONS in mm										Net weight (acoustic diffuser)
	A	B	C	D	e	f*	g	h	j	k	
V4/7FAD	605	600	740	1100	300	140	295	200	860	310	42 kg
V6/10FAD	605	600	740	1100	300	140	295	200	860	310	42 kg
V7/7FAD	605	600	1010	1100	300	-	295	200	860	310	47 kg
V7.5/12FAD	605	600	740	1100	300	140	295	200	860	310	42 kg
V8/7FAD	1130	690	740	1100	315	140	310	240	860	340	45 kg
V9/15FAD	605	600	740	1100	300	140	295	200	860	310	42 kg
V10/10FAD	605	600	1010	1100	300	-	295	200	860	310	47 kg
V12/10FAD	1130	690	740	1100	315	140	310	240	860	340	45 kg
V13/12FAD	605	600	1010	1100	300	-	295	200	860	310	47 kg
V14/7FAD	1130	690	1010	1100	315	-	310	240	860	340	50 kg
V15/12FAD	1130	690	740	1100	315	140	310	240	860	340	45 kg
V15/15FAD	605	600	1010	1100	300	-	295	200	860	310	47 kg
V18/15FAD	1130	690	740	1100	315	140	310	240	860	340	45 kg
V20/10FAD	1130	690	1010	1100	315	-	310	240	860	340	50 kg
V21/7FAD	1730	810	1010	1190	440	-	310	265	910	390	58 kg
V25/12FAD	1130	690	1010	1100	315	-	310	240	860	340	50 kg
V30/10FAD	1730	810	1010	1190	440	-	310	265	910	390	58 kg
V30/15FAD	1130	690	1010	1100	315	-	310	240	860	340	50 kg
V35/17FAD	1130	690	1010	1100	315	-	310	240	860	340	50 kg
V38/12FAD	1730	810	1010	1190	440	-	310	265	910	390	58 kg
V40/20FAD	1130	690	1010	1100	315	-	310	240	860	340	50 kg
V45/15FAD	1730	810	1010	1190	440	-	310	265	910	390	58 kg
V50/12FAD-K10	2255	810	1010	1190	440	-	310	265	910	390	60 kg
V50/12FAD-K11	2255	810	1010	1190	440	-	310	265	910	390	60 kg
V50/12FAD-K15	2255	960	1215	1250	445	215	310	330	895	520	85 kg
V52/17FAD	1730	810	1010	1190	440	-	310	265	910	390	58 kg
V60/15FAD-K10	2255	810	1010	1190	440	-	310	265	910	390	60 kg
V60/15FAD-K11	2255	810	1010	1190	440	-	310	265	910	390	60 kg
V60/15FAD-K15	2255	960	1215	1250	445	215	310	330	895	520	85 kg
V60/20FAD	1730	810	1010	1190	440	-	310	265	910	390	58 kg
V70/17FAD-K10	2255	810	1010	1190	440	-	310	265	910	390	60 kg
V70/17FAD-K11	2255	810	1010	1190	440	-	310	265	910	390	60 kg
V70/17FAD-K15	2255	960	1215	1250	445	215	310	330	895	520	85 kg
V80/20FAD-K10	2255	810	1010	1190	440	-	310	265	910	390	60 kg
V80/20FAD-K11	2255	810	1010	1190	440	-	310	265	910	390	60 kg
V80/20FAD-K15	2255	960	1215	1250	445	215	310	330	895	520	85 kg

Dalamatic Insertable Dust Collectors – Series DLM V



FRONT ELEVATION

**OPTIONAL ACOUSTIC DIFFUSER
DUCT CONNECTION SPIGOT**



FRONT ELEVATION

**OPTIONAL ACOUSTIC DIFFUSER
WEATHER COWL**

DLM type	DIMENSIONS in mm	
	A	B
V4/7FAD, V6/10FAD, V7/7FAD, V7.5/12FAD, V9/15FAD, V10/10FAD, V13/12FAD and V15/15FAD	270	172
V8/7FAD, V12/10FAD, V14/7FAD, V15/12FAD, V18/15FAD, V20/10FAD, V25/12FAD, V30/15FAD, V35/17FAD and V40/20FAD	300	196
V21/7FAD, V30/10FAD, V38/12FAD, V45/15FAD, V50/12FAD, V52/17FAD, V60/15FAD, V60/20FAD, V70/17FAD and V80/20FAD	350	240
V50/12FAD-K15, V60/15FAD-K15, V70/17FAD-K15 and V80/20FAD-K15	480	260

COMPRESSED AIR REQUIREMENTS

DLM type	Working compressed air pressure ^a		Atmospheric air volume – F.A.D. ^b		Pulse duration
at 25 s intervals ^c					
V3/7 and V5/12	4.1 bar	60 psig	2.6 m ³ /h	1.5 cfm	100 ms
V4/7, V6/10, V7.5/12 and V9/15	4.1 bar	60 psig	3.3 m ³ /h	1.9 cfm	100 ms
V7/7, V10/10, V13/12 and V15/15	4.1 bar	60 psig	4.0 m ³ /h	2.4 cfm	100 ms
V8/7, V12/10, V15/12 and V18/15	5.2 bar	75 psig	6.0 m ³ /h	3.6 cfm	100 ms
V14/7 and V20/10 (5 valve)	5.2 bar	75 psig	7.2 m ³ /h	4.2 cfm	100 ms
at 12 s intervals ^c					
V20/10 (10 valve)	4.1 bar	60 psig	6.1 m ³ /h	3.6 cfm	60 ms
V21/7 and V30/10	4.5 bar	65 psig	7.8 m ³ /h	4.6 cfm	60 ms
V25/12 and V30/15	4.1 bar	60 psig	7.4 m ³ /h	4.3 cfm	60 ms
V35/17 and V40/20	4.5 bar	65 psig	8.7 m ³ /h	5.1 cfm	100 ms
V38/12 and V45/15	4.5 bar	65 psig	9.5 m ³ /h	5.6 cfm	60 ms
V50/12 and V60/15	5.2 bar	75 psig	13.7 m ³ /h	8.0 cfm	60 ms
V52/17 and V60/20	5.2 bar	75 psig	11.2 m ³ /h	6.6 cfm	100 ms
V70/17 and V80/20	6.2 bar	90 psig	16.1 m ³ /h	9.5 cfm	100 ms

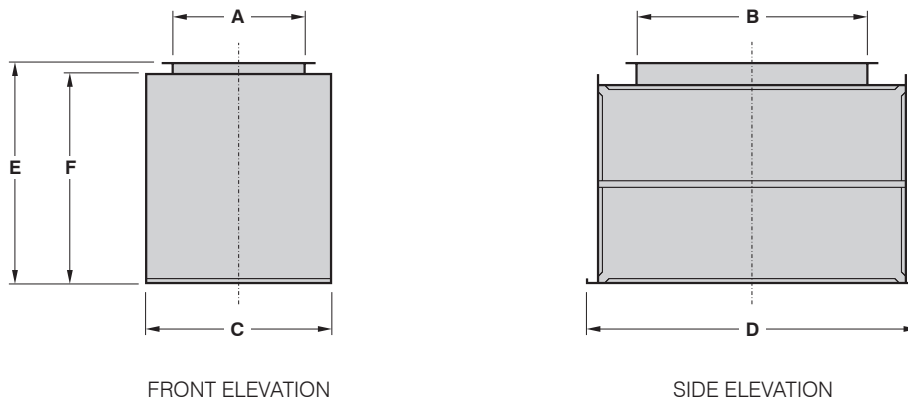
^aNormal operating pressure

^bRecommended atmospheric air volume of clean, dry compressed air

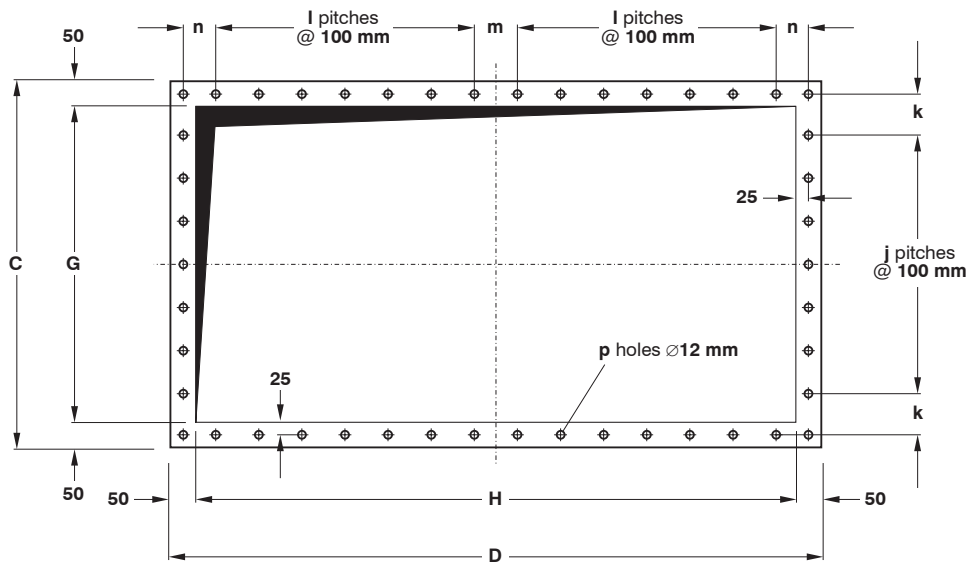
^cRecommended initial settings; these may be varied with experience

Data Sheet

Dalamatic Insertable Dust Collectors – Series DLM V



VERTICAL HOUSING ASSEMBLY



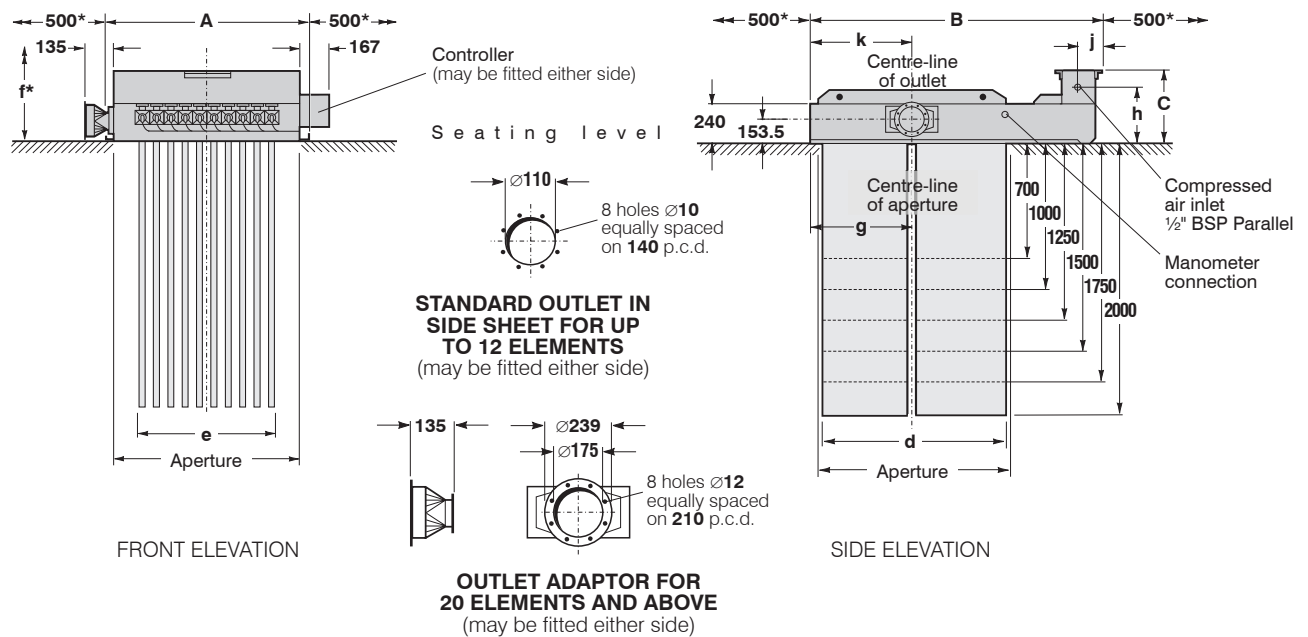
VERTICAL HOUSING BASE FLANGE

DLM type	A	B	C	D	E	F	G	H	j	k	l	m	n	p	Net weight (approx.)
V4/7 and V6/10	600 mm	525 mm	840 mm	875 mm	1000 mm	950 mm	740 mm	775 mm	6	95 mm	3	100 mm	62.5 mm	34	120 kg
V7/7 and V10/10	1000 mm	525 mm	1200 mm	875 mm	1000 mm	950 mm	1100 mm	775 mm	10	75 mm	3	100 mm	62.5 mm	42	140 kg
V7.5/12 and V9/15	600 mm	525 mm	1050 mm	1000 mm	1500 mm	1450 mm	950 mm	900 mm	10	0 mm	4	0 mm	75 mm	40	185 kg
V8/7 and V12/10	600 mm	1050 mm	840 mm	1500 mm	1000 mm	950 mm	740 mm	1400 mm	6	95 mm	6	100 mm	75 mm	46	160 kg
V13/12 and V15/15	1000 mm	525 mm	1200 mm	1200 mm	1500 mm	1450 mm	1100 mm	1100 mm	10	75 mm	4	100 mm	125 mm	46	235 kg
V14/7 and V20/10	1000 mm	1050 mm	1400 mm	1500 mm	1000 mm	950 mm	1300 mm	1400 mm	12	75 mm	6	100 mm	75 mm	58	195 kg
V15/12 and V18/15	600 mm	1050 mm	1050 mm	1500 mm	1500 mm	1450 mm	950 mm	1400 mm	10	0 mm	6	100 mm	75 mm	50	240 kg
V21/7 and V30/10	1000 mm	1650 mm	1400 mm	2300 mm	1000 mm	950 mm	1300 mm	2200 mm	12	75 mm	9	200 mm	125 mm	70	275 kg
V25/12 and V30/15	1000 mm	1050 mm	1400 mm	1900 mm	1500 mm	1450 mm	1300 mm	1800 mm	12	75 mm	8	100 mm	75 mm	66	325 kg
V38/12 and V45/15	1000 mm	1650 mm	1400 mm	2800 mm	1500 mm	1450 mm	1300 mm	2700 mm	12	75 mm	13	0 mm	75 mm	84	430 kg
V50/12 and V60/15	1000 mm	2175 mm	1400 mm	3700 mm	1500 mm	1450 mm	1300 mm	3600 mm	12	75 mm	17	100 mm	75 mm	102	520 kg

OPTIONAL VERTICAL HOUSING DETAILS

Vertical housing for DLM V8/7 or V12/10 illustrated.

Dalamic Insertable Dust Collectors – Series DLM V



* Nominal clearances for maintenance
Where space is restricted please consult with Donaldson. Clearance of at least 150 mm to be left on all sides of the filter elements.

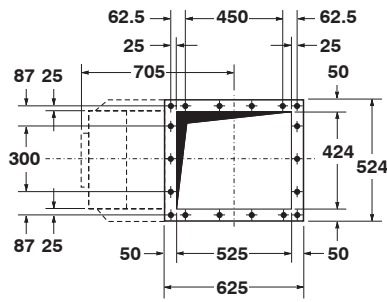
DALAMATIC S TYPE INSERTABLE DUST COLLECTOR

Model DLM V40/20S illustrated, broken lines representing models DLM V14/7S, DLM V20/10S, DLM V25/12S, DLM V30/15S and DLM V35/17S. Suitable for inside and outside locations.

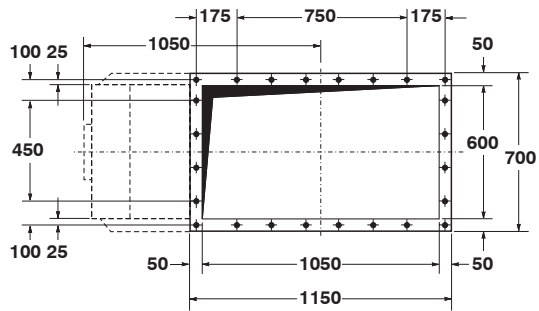
DLM type	Filtration area	Number of elements	DIMENSIONS in mm										Net weight (approx.)
			A	B	C	d	e	f*	g	h	j	k	
V3/7S	3 m ²	4	524	1015	395	480	294	850	310	315	115	310	110 kg
V4/7S	4 m ²	6	700	1015	395	480	470	850	310	315	115	310	140 kg
V5/12S	5 m ²	4	524	1015	395	480	294	1400	310	315	115	310	116 kg
V6/10S	6 m ²	6	700	1015	395	480	470	1150	310	315	115	310	150 kg
V7/7S	7 m ²	10	1100	1015	395	480	820	850	310	315	115	310	205 kg
V7.5/12S	7.5 m ²	6	700	1015	395	480	470	1400	310	315	115	310	155 kg
V8/7S	8 m ²	12	700	1625	420	1005	470	850	575	330	130	565	220 kg
V9/15S	9 m ²	6	700	1015	395	480	470	1650	310	315	115	310	160 kg
V10/10S	10 m ²	10	1100	1015	395	480	820	1150	310	315	115	310	225 kg
V12/10S	12 m ²	12	700	1625	420	1005	470	1150	575	330	130	565	240 kg
V13/12S	13 m ²	10	1100	1015	395	480	820	1400	310	315	115	310	233 kg
V14/7S	14 m ²	20	1100	1625	420	1005	820	850	575	330	130	592	370 kg
V15/12S	15 m ²	12	700	1625	420	1005	470	1400	575	330	130	565	249 kg
V15/15S	15 m ²	10	1100	1015	395	480	820	1650	310	315	115	310	245 kg
V18/15S	18 m ²	12	700	1625	420	1005	470	1650	575	330	130	565	265 kg
V20/10S	20 m ²	20	1100	1625	420	1005	820	1150	575	330	130	592	405 kg
V21/7S	21 m ²	30	1100	2225	420	1605	820	850	875	330	130	742	525 kg
V25/12S	25 m ²	20	1100	1625	420	1005	820	1400	575	330	130	592	420 kg
V30/10S	30 m ²	30	1100	2225	420	1605	820	1150	875	330	130	742	570 kg
V30/15S	30 m ²	20	1100	1625	420	1005	820	1650	575	330	130	592	455 kg
V35/17S	35 m ²	20	1100	1625	420	1005	820	1150	575	330	130	592	462 kg
V38/12S	38 m ²	30	1100	2225	420	1605	820	1400	875	330	130	742	592 kg
V40/20S	40 m ²	20	1100	1625	420	1005	820	1150	575	330	130	592	479 kg
V45/15S	45 m ²	30	1100	2225	420	1605	820	1650	875	330	130	742	630 kg
V50/12S	50 m ²	40	1100	2747	420	2130	820	1400	1137	330	130	1234	790 kg
V52/17S	52 m ²	30	1100	2225	420	1605	820	1650	875	330	130	742	660 kg
V60/15S	60 m ²	40	1100	2747	420	2130	820	1650	1137	330	130	1234	820 kg
V60/20S	60 m ²	30	1100	2225	420	1605	820	1650	875	330	130	742	685 kg
V70/17S	70 m ²	40	1100	2747	420	2130	820	1650	1137	330	130	1234	863 kg
V80/20S	80 m ²	40	1100	2747	420	2130	820	1650	1137	330	130	1234	897 kg

Data Sheet

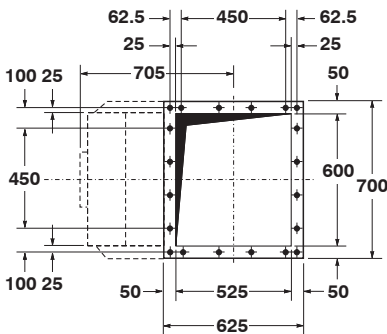
Dalamatic Insertable Dust Collectors – Series DLM V



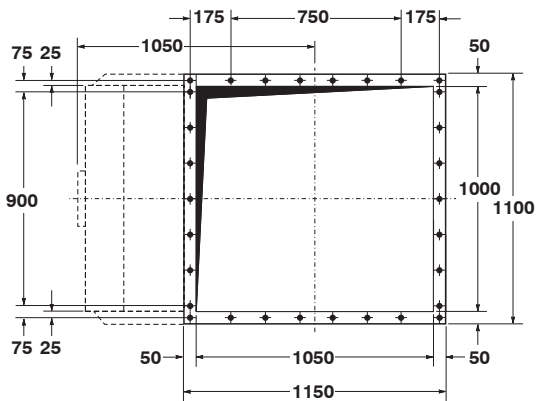
DLM V3/7 AND V5/12



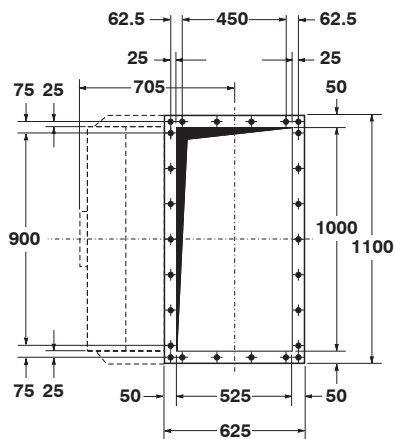
DLM V8/7, V12/10, V15/12 AND V18/15



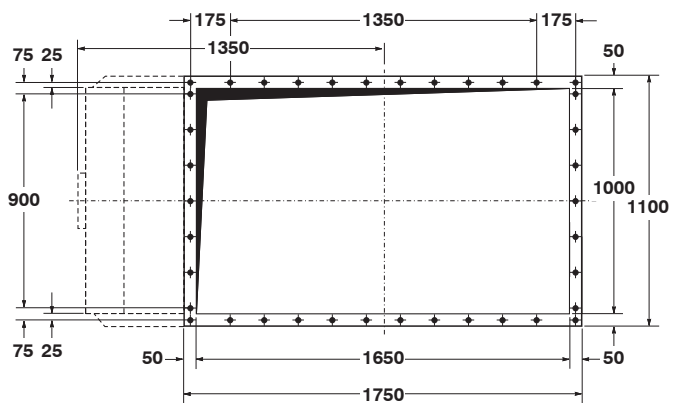
DLM V4/7, V6/10, V7.5/12 AND V9/15



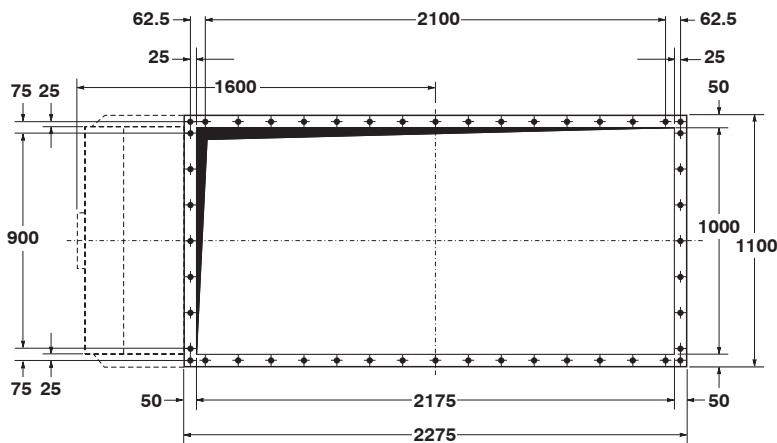
DLM V14/7, V20/10, V25/12, V30/15, V35/17 AND V40/20



DLM V7/7, V10/10, V13/12 AND V15/15



DLM V21/7, V30/10, V38/12, V45/15, V52/17 AND V60/20



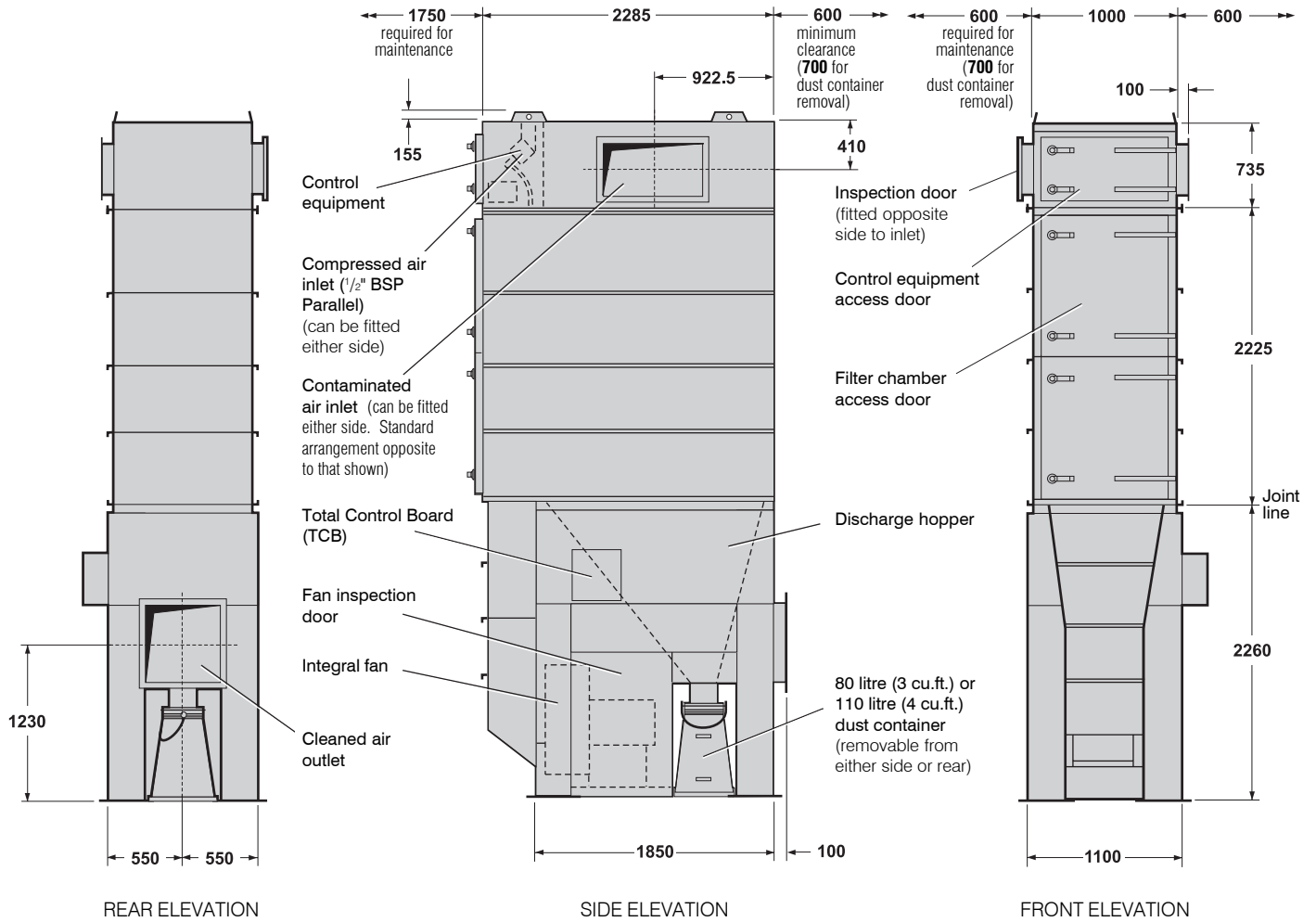
DLM V50/12, V60/15, V70/17 AND V80/20

APERTURE AND MOUNTING FLANGE DETAILS FOR TYPE S COLLECTOR

All bolt holes $\varnothing 12$ mm for M10 set screws. Pitch centres: 150 mm.

Dalamatic Concept Dust Collectors

Series D60

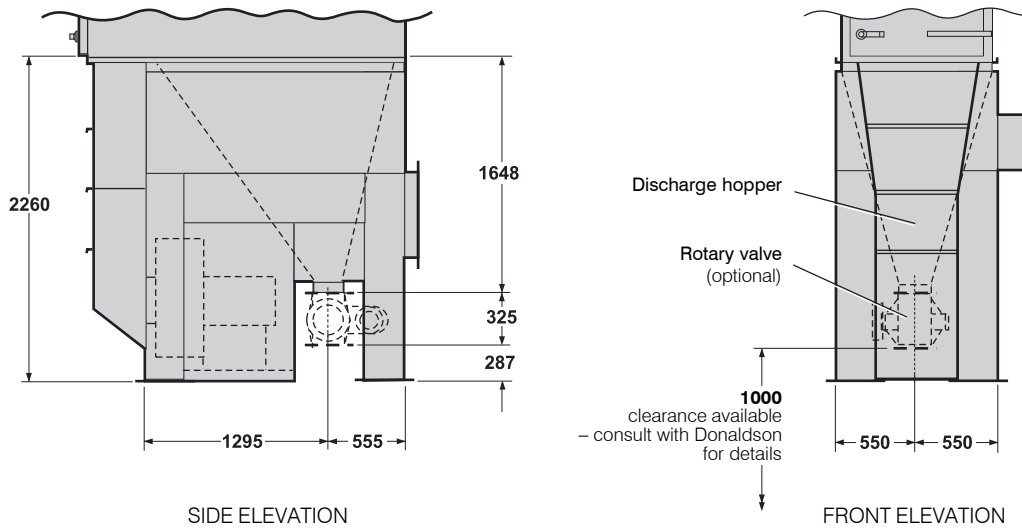


Dalamatic Concept D60 collector with dust container configuration

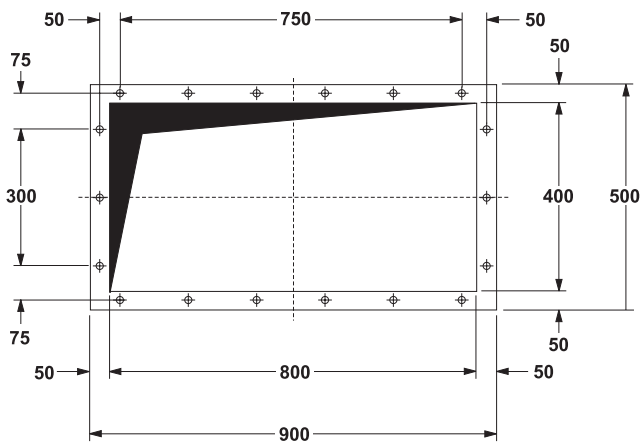
SPECIFICATION								
D60 type	No. of banks (X)	No. of tiers (Y)	No. of cells (X × Y)	Filtration area	Fan type	Motor rating	Approx. net weight	Air volume – F.A.D.* at 12 sec. intervals
Dust container or rotary valve	1	4	4	60 m ²	K11 K15 CSR15	7.5 kW 11.0 kW 15.0 kW	2200 kg	13.7 m ³ /h 8.1 cfm

* Pulse duration: 60 millisec. Recommended atmospheric air volume of clean, dry compressed air at 5.2 bar (75 psig) normal operating pressure.

Dalamatic Concept Dust Collectors – Series D60

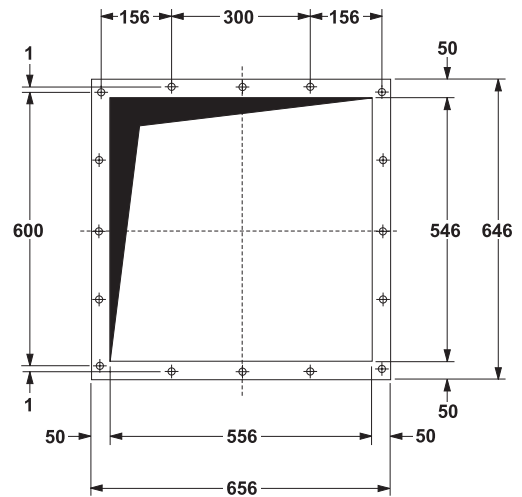


Dalamatic Concept D60 collector with rotary valve configuration



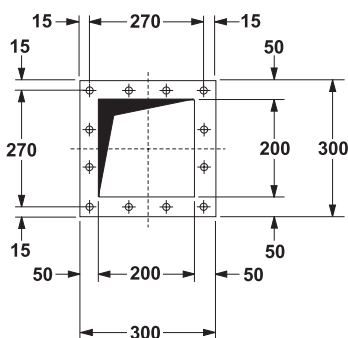
Contaminated air inlet details

All holes \varnothing 12mm for M10 bolts. Pitch centres: 150mm



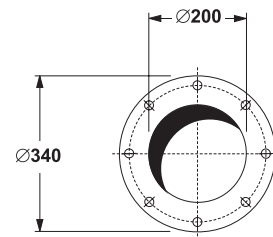
Cleaned air outlet details (with deflector removed)

All holes \varnothing 12mm for M10 bolts. Pitch centres: 150mm



Rotary valve hopper outlet flange details

All holes \varnothing 12mm for M10 bolts. Pitch centres: 90mm

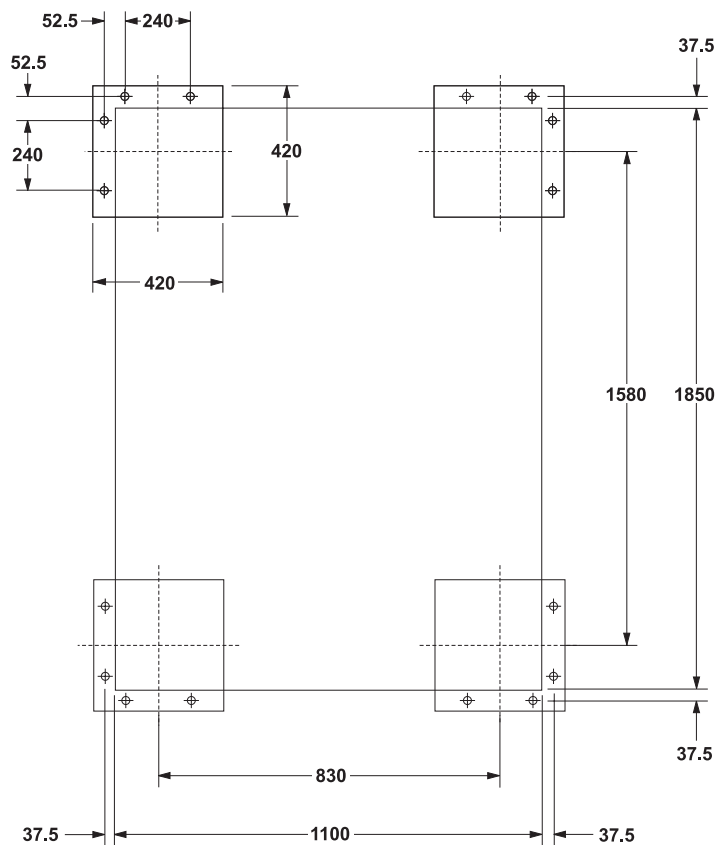


Rotary valve outlet flange details (for rotary valve supplied by Donaldson)

All holes \varnothing 14mm for M12 bolts equally spaced on 280mm p.c.d.

Data Sheet

Dalamatic Concept Dust Collectors – Series D60



FRONT OF COLLECTOR

Foundation details

All holes \varnothing 28mm for M16 foundation bolts.

DESIGN LIMITS (standard equipment)

Temperature range:

-10° to +60°C (Std.) or -10° to +100°C* (For temperatures above 100°C refer to Donaldson).

Pressure limits:

Collector with fan: as fan performance curves from shut-off to operating pressure.

Collector without fan: -500mm W.G. or -1140mm W.G. (For positive pressures refer to Donaldson).

Dimension tolerances:

±5mm on main dimensions. ±2mm on detail dimensions.

*For temperatures above 60°C the enclosed base cannot be used – an in-line attenuator may be required.

ELECTRICAL SPECIFICATIONS

Controls

Full automatic cleaning mechanism: Total Control Board

Pulse time: 60 ms

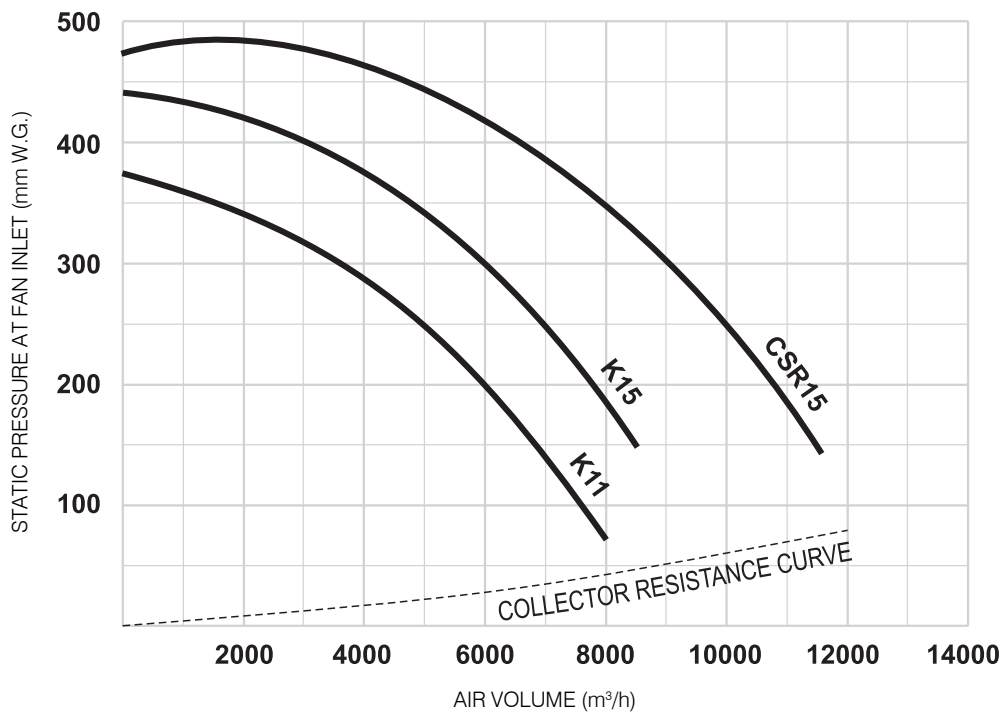
Interval time: 12 sec.

Voltage input: 400V AC; 3 ph; 50 Hz

Protection class: IP65

Solenoid voltage: 24V DC

Dalamatic Concept Dust Collectors – Series D60



Collector performance curves

FAN SELECTION

These curves indicate static pressure available at fan inlet for a given volume, when fitted inside a D60 collector.

To select the most suitable fan for a given application:

- 1 Determine the air volume, in m³/h, needed to entrain the dust.
- 2 Read off the collector resistance, in mm W.G., at air volume required.
- 3 Assess pressure drop across filter bags prior to cleaning, usually 50 to 100mm W.G.
- 4 Estimate pressure drop through connected system – i.e. between point of entrainment and collector inlet.
- 5 The sum of **2**, **3** and **4** = W.G. required.
- 6 Consult graph for fan performances available.

NOISE LEVELS

Machinery noise levels are an important consideration in the design and selection of new equipment. Several EC Directives and National Laws/Regulations adopting these directives make reference to airborne noise emissions. Actions that employers are required to comply with if employees are subjected to a daily personal noise exposure Lep,d of 85 dB(A) or more are also specified.

All Dalamatic Concept collectors are below this action limit.

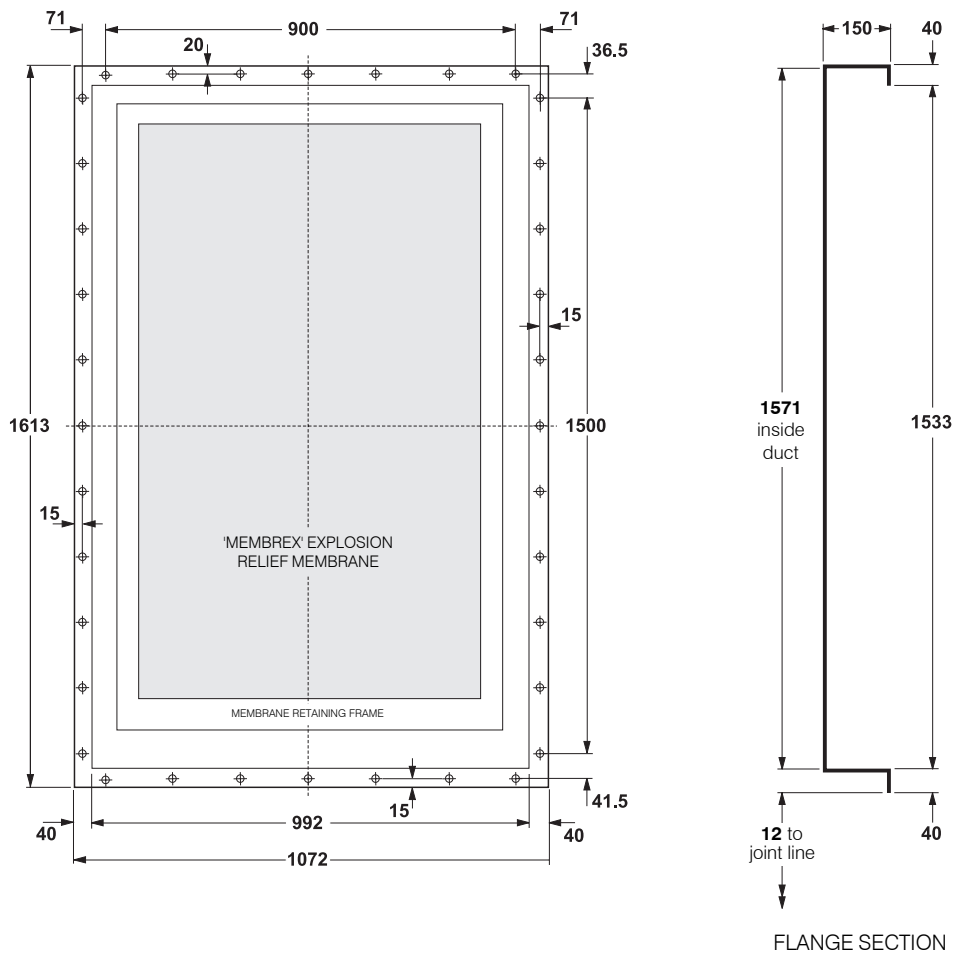
WEIGHTED SOUND PRESSURE LEVELS

All readings were taken in normal industrial areas, i.e. semi-reverberant surroundings, with local equipment silent. Measurements were taken at maximum air flow conditions at 1.0 metre radius from the equipment housing and 1.6 metres above base level, using a precision sound level meter and octave filter.

K11	K15	CSR15
78 dB(A)*	79 dB(A)	75 dB(A)*

Noise levels of installed equipment may vary due to site conditions

*Estimated values

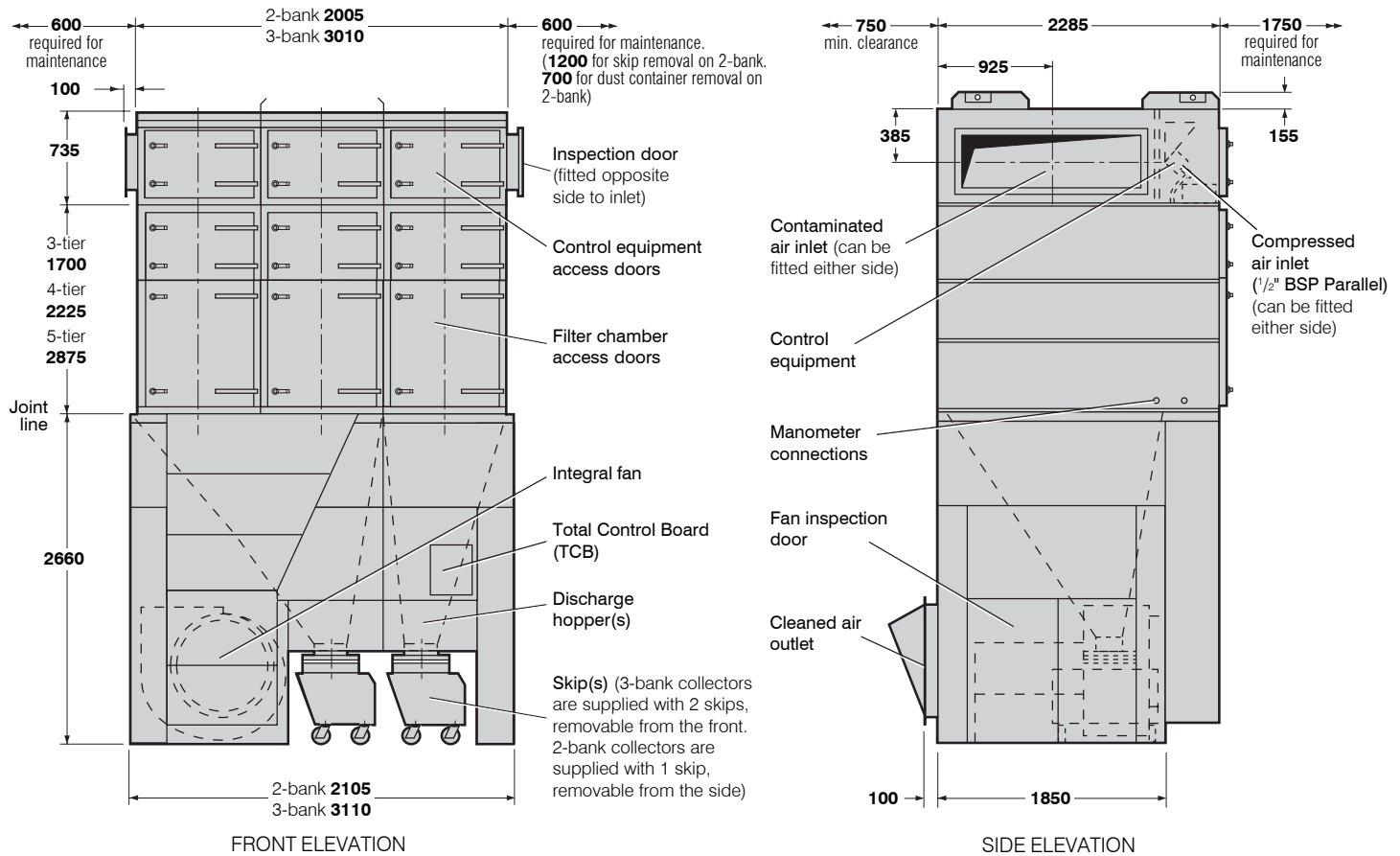


Rear explosion relief flange mounting details

Bottom and vertical holes $\varnothing 10\text{mm}$; top holes $10 \times 20\text{mm}$ slots. All for M8 bolts. Pitch centres 150mm.
 NOTE: Mounting flange projects 100mm beyond rear of collector.

Dalamatic Concept Dust Collectors

Series D90-225

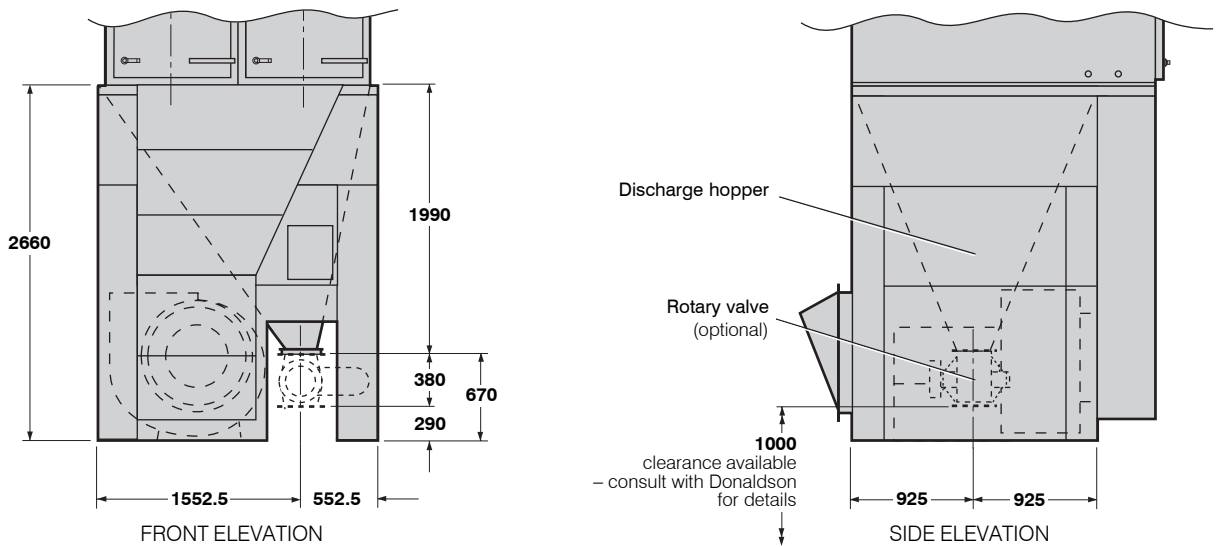


Dalamatic Concept 3-bank, 3-tier collector (D 135), with skip configuration

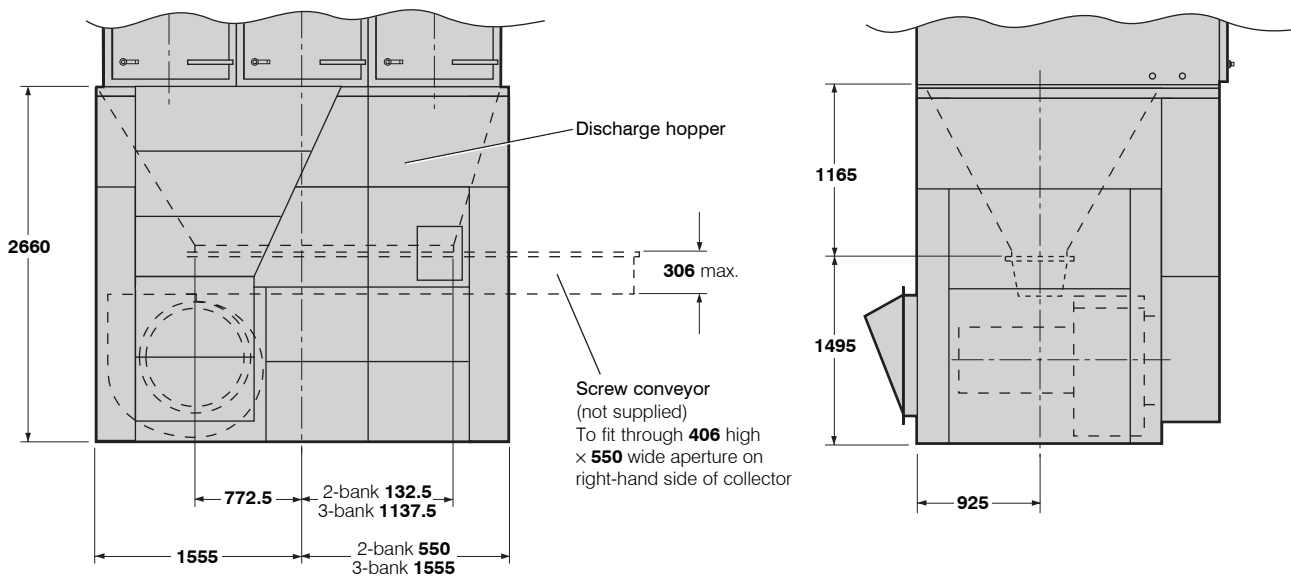
Collector type	No. of banks (X)	No. of tiers (Y)	No. of cells (X × Y)	Filtration area	COLLECTOR CONFIGURATION				Fan type ^c	Motor rating
					Skip ^a	Dust container ^b	Screw conveyor	Rotary valve		
D 90	2	3	6	90 m ²	✓	✓	✓	✓	K18	15.0 kW
D 120	2	4	8	120 m ²	✓	✓	✓	✓	K18 K21	15.0 kW 18.5 kW
D 135	3	3	9	135 m ²	✓ (2)	✓ (2)	✓	✗	K21 CDR22	18.5 kW 22.0 kW
D 150	2	5	10	150 m ²	✓	✓	✓	✓	CDR22 CDR30	22.0 kW 30.0 kW
D 180	3	4	12	180 m ²	✓ (2)	✓ (2)	✓	✗	CDR22 CDR30	22.0 kW 30.0 kW
D 225	3	5	15	225 m ²	✓ (2)	✓ (2)	✓	✗	CDR30	30.0 kW

^aSize: 233 litre (8 cu.ft.). ^bSize: 80 litre (3 cu.ft.) or 110 litre (4 cu.ft.). ^cConsult with Donaldson for fan interchangeability.

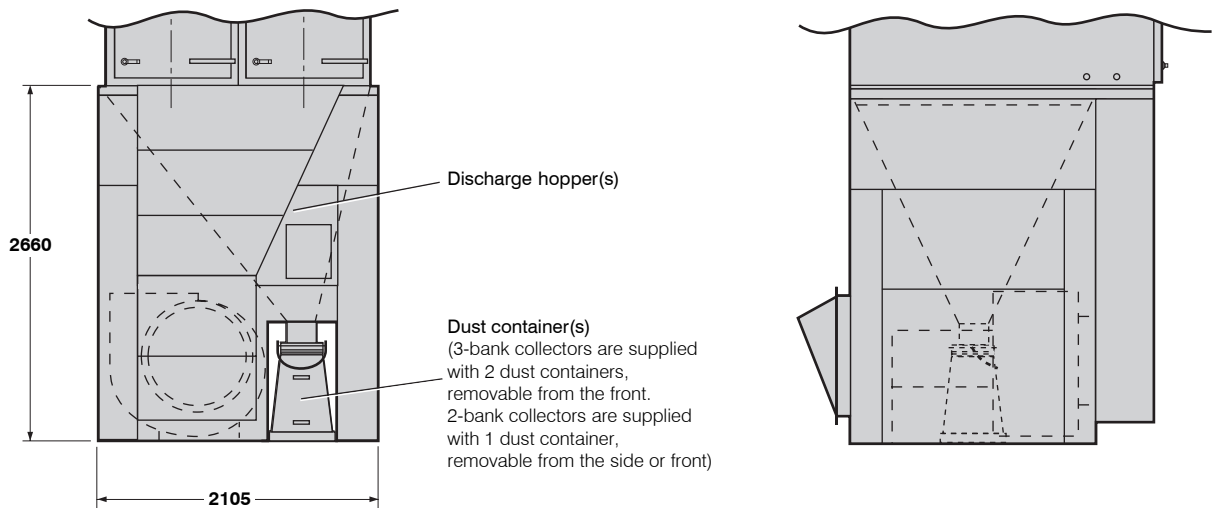
Dalamic Concept Dust Collectors – Series D90-225



Dalamic Concept 2-bank collector with rotary valve configuration



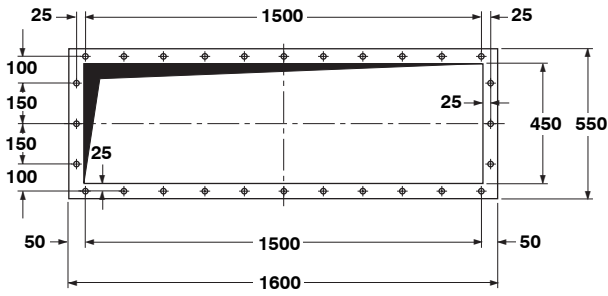
Dalamic Concept 3-bank collector with screw conveyor configuration



Dalamic Concept 2-bank collector with dust container configuration

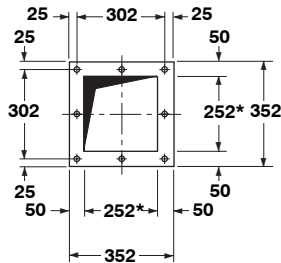
Data Sheet

Dalamatic Concept Dust Collectors – Series D90-225



Contaminated air inlet details

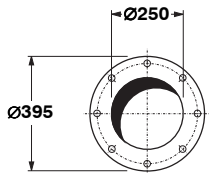
All holes \varnothing 12mm for M10 bolts. Pitch centres: 150mm



Rotary valve hopper outlet flange details

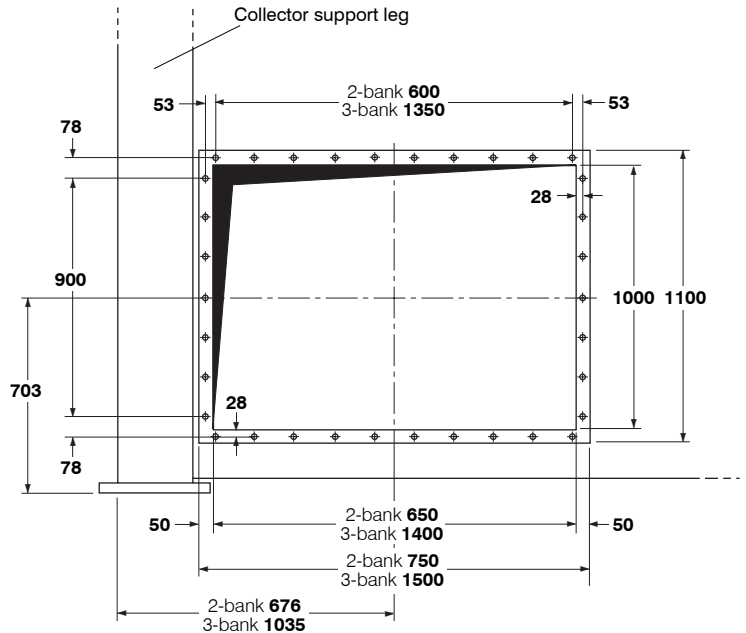
All holes \varnothing 14mm for M12 bolts. Pitch centres: 151mm

*Inside dimensions of hopper outlet = 242 x 242mm



Rotary valve outlet flange details (for rotary valve supplied by Donaldson)

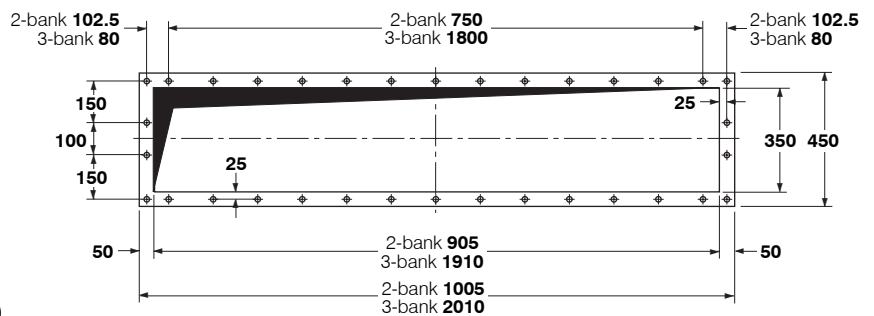
All holes \varnothing 14mm for M12 bolts
equally spaced on 350mm p.c.d.



REAR ELEVATION

Cleaned air outlet details (with deflector removed)

Outlet details for 3-bank collector illustrated.
Outlet for 2-bank collector has 5 horizontal bolt holes.
All holes \varnothing 12mm for M10 bolts. Pitch centres: 150mm



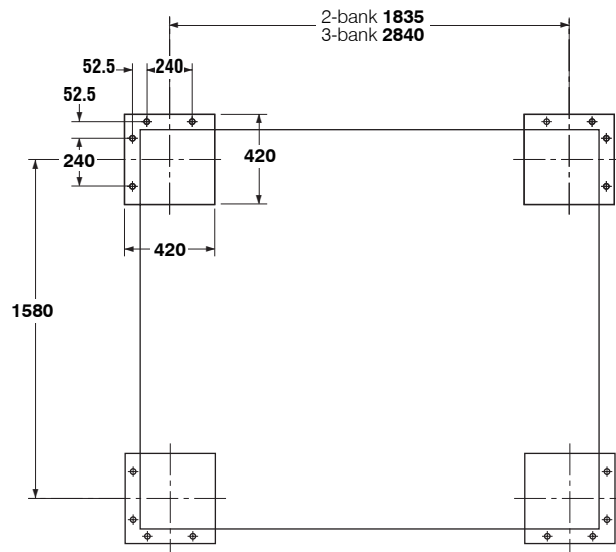
Screw conveyor hopper outlet flange details

Flange details for 3-bank collector illustrated.
Flange for 2-bank collector has 8 horizontal bolt holes.
All holes 12 x 20mm slots, parallel to long edge.
Pitch centres: 150mm except where shown

APPROXIMATE NET WEIGHTS in kg

	D 90	D 120	D 135	D 150	D 180	D 225
With skip	3550	3900	4710	4340	5225	5865
With dust container	3530	3890	4660	4325	5175	5820
With screw conveyor	3480	3835	4565	4270	5080	5720
With rotary valve	3530	3890	–	4325	–	–

Dalamatic Concept Dust Collectors – Series D90-225



FRONT OF COLLECTOR

Foundation details

All holes Ø28mm for M16 foundation bolts.

COMPRESSED AIR REQUIREMENTS

Collector type	Working compressed air pressure ^a		Atmospheric air volume – F.A.D. ^b		Pulse interval ^c	Pulse duration
D 90	3.7 bar	55 psig	19.0 m ³ /h	11.2 cfm	12 sec.	60 ms
D 120	5.2 bar	75 psig	27.5 m ³ /h	16.2 cfm	12 sec.	60 ms
D 135	3.7 bar	55 psig	28.6 m ³ /h	16.8 cfm	8 sec.	60 ms
D 150	5.2 bar	75 psig	27.5 m ³ /h	16.2 cfm	12 sec.	60 ms
D 180	5.2 bar	75 psig	41.1 m ³ /h	24.2 cfm	8 sec.	60 ms
D 225	5.2 bar	75 psig	41.1 m ³ /h	24.2 cfm	8 sec.	60 ms

^a Normal operating pressure. ^b Recommended atmospheric air volume of clean, dry compressed air.

^c Recommended initial settings; these may be varied with experience.

For connection details please refer to Donaldson.

NOISE LEVELS

Machinery noise levels are an important consideration in the design and selection of new equipment. Several EC Directives and National Laws/Regulations adopting these directives make reference to airborne noise emissions. Actions that employers are required to comply with if employees are subjected to a daily personal noise exposure Lep,d of 85 dB(A) or more are also specified.

All Dalamatic Concept collectors are below this action limit.

WEIGHTED SOUND PRESSURE LEVELS

All readings were taken in normal industrial areas, i.e. semi-reverberant surroundings, with local equipment silent. Measurements were taken at maximum air flow conditions at 1.0 metre radius from the equipment housing and 1.6 metres above base level, using a precision sound level meter and octave filter.

Low pressure fans				High pressure fans				
K18	K21	CDR22	CDR30	CSR15	CSR18	CSR22	CSR30	CSR37
73 dB(A)*	74 dB(A)*	75 dB(A)*	76 dB(A)*	72 dB(A)*	72 dB(A)*	73 dB(A)*	75 dB(A)*	76 dB(A)

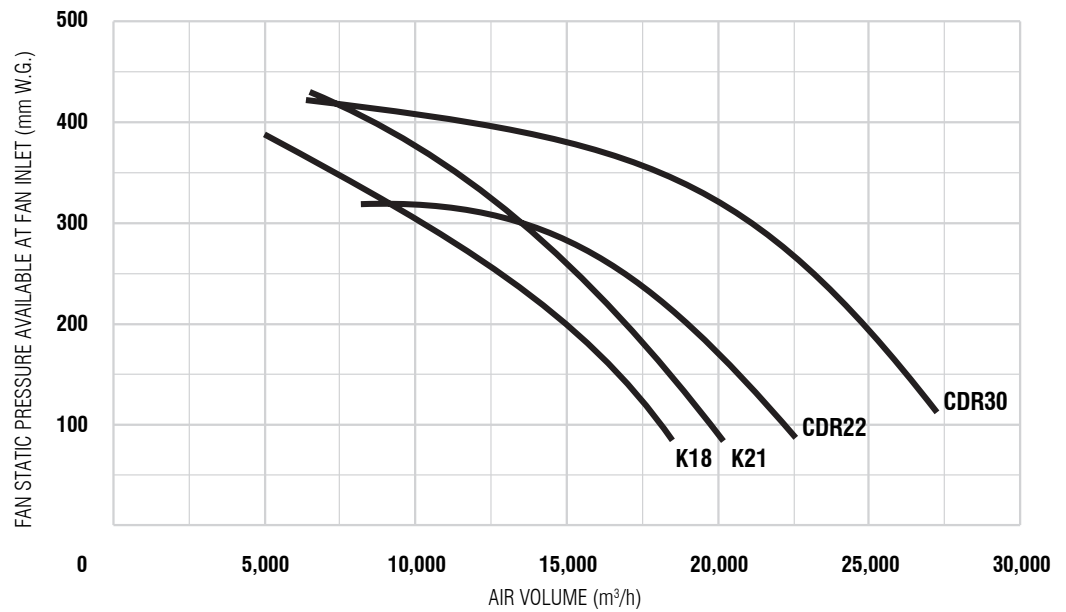
Noise levels of installed equipment may vary due to site conditions

Measurements are based on D 90 filters – noise levels for other sizes of collectors may differ slightly. *Estimated values.

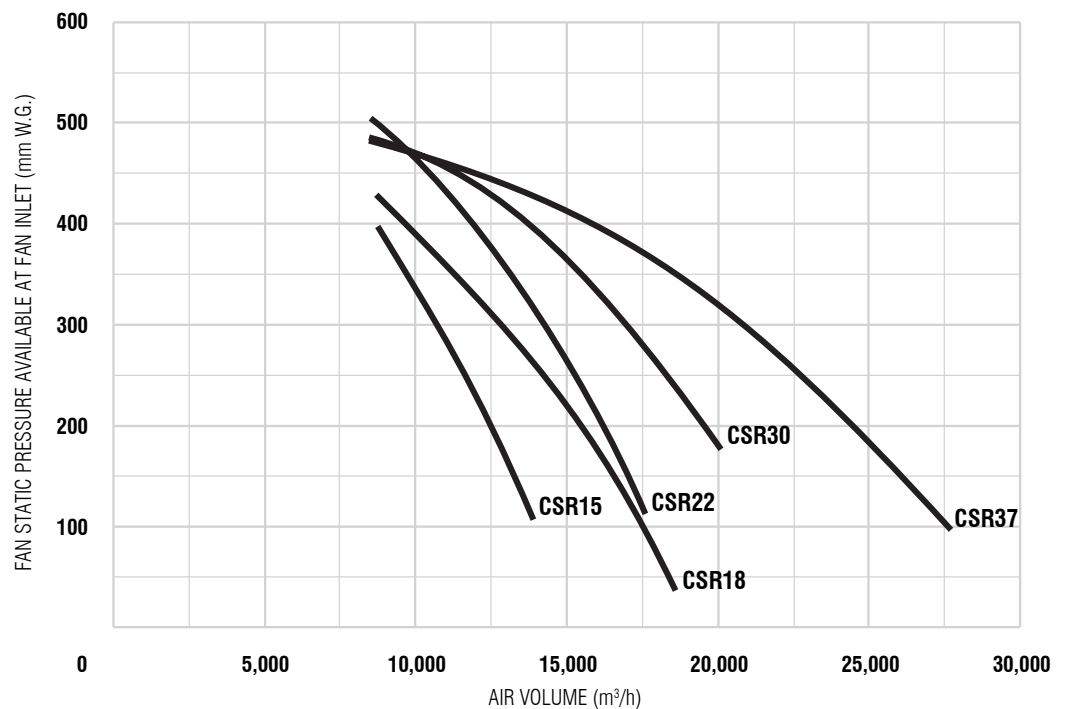
Data Sheet

Dalamatic Concept Dust Collectors – Series D90-225

Low pressure fans



High pressure fans



Fan performance curves

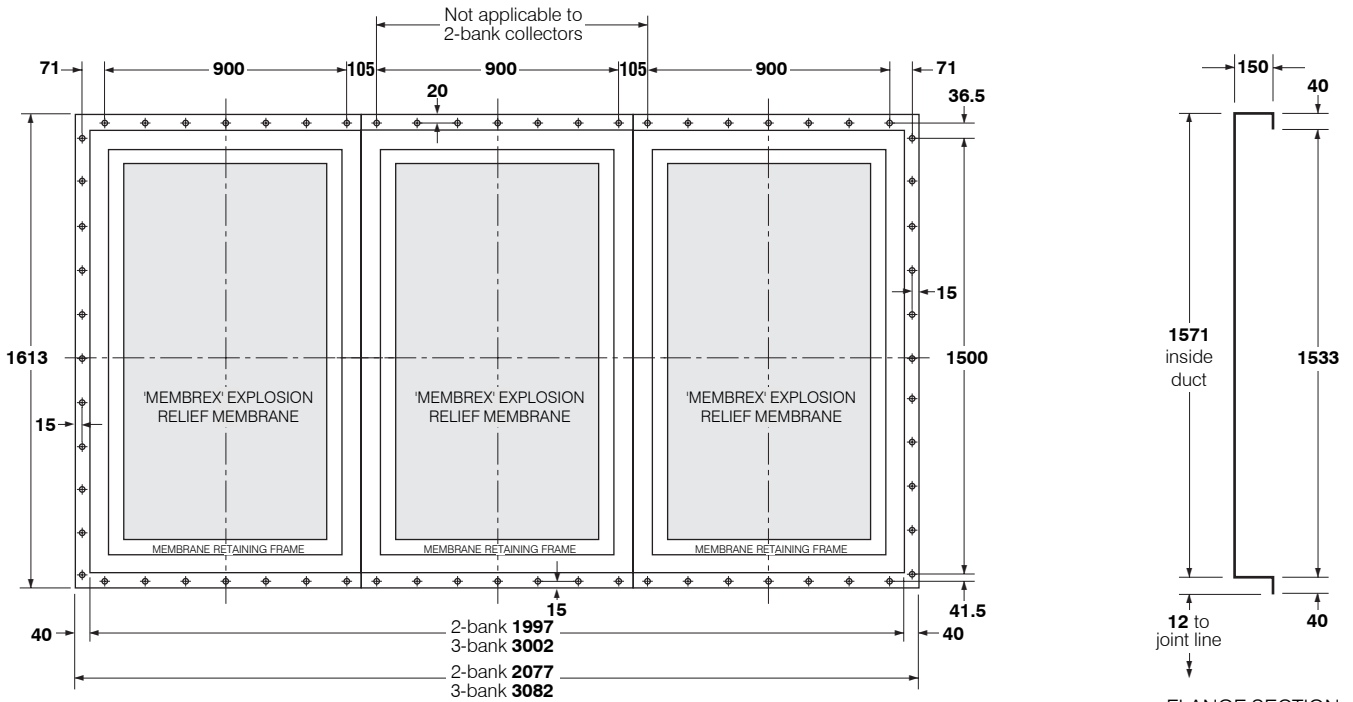
FAN SELECTION

These curves indicate fan static pressure available at fan inlet for a given volume.

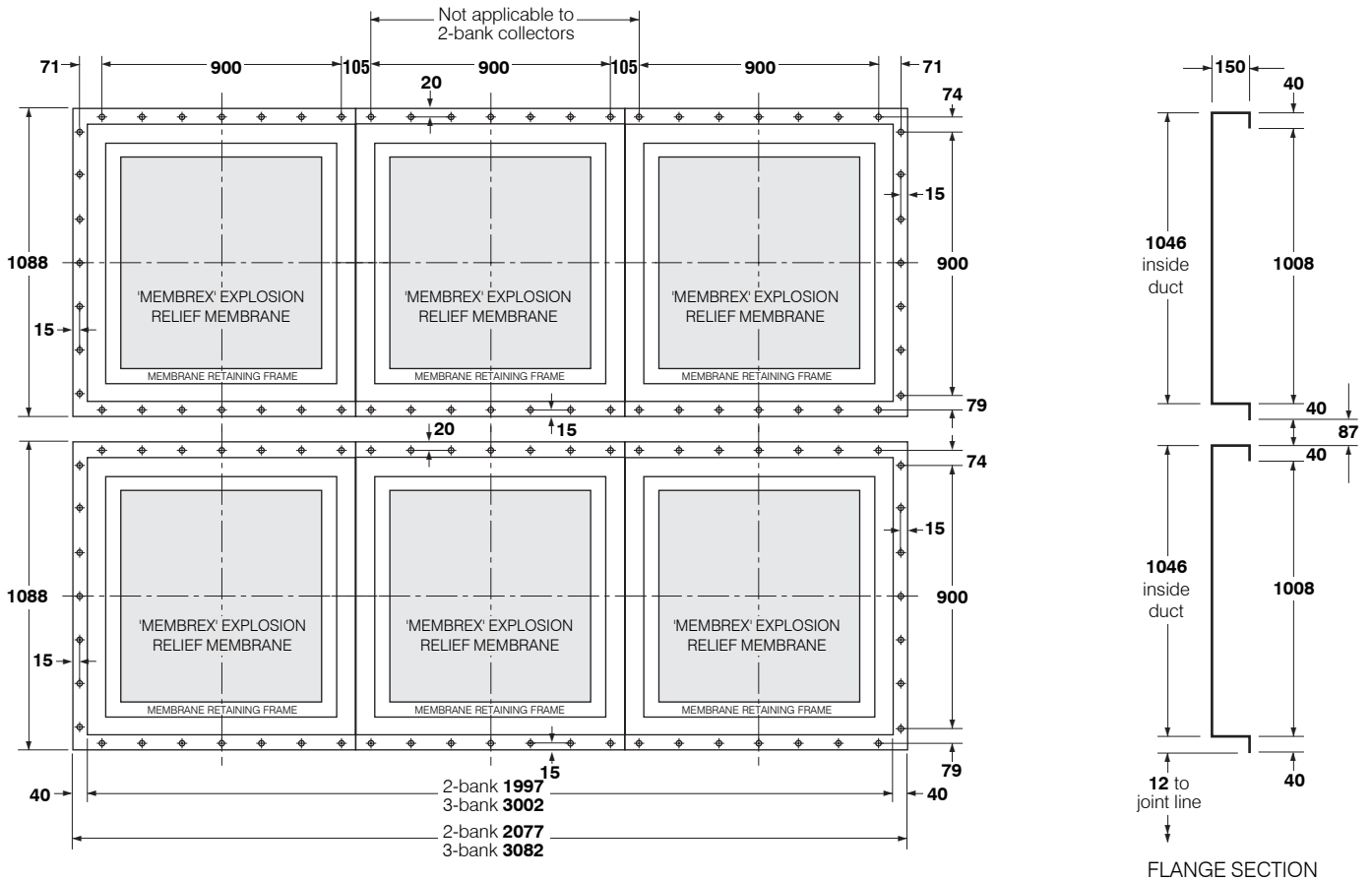
To select the most suitable fan for a given application:

- 1 Determine the air volume, in m³/h, needed to entrain the dust.
- 2 Estimate pressure drop through connected system – i.e. between point of entrainment and collector inlet.
- 3 Allow for pressure drop over dust collector, typically 125 to 175mm W.G.
- 4 The sum of **2** and **3** = W.G. required.
- 5 Consult graph to select appropriate fan for the duty.
- 6 Consult Donaldson for fan interchangeability.

Dalamatic Concept Dust Collectors – Series D90-225



D 90, 120, 135 and 180 rear explosion relief flange



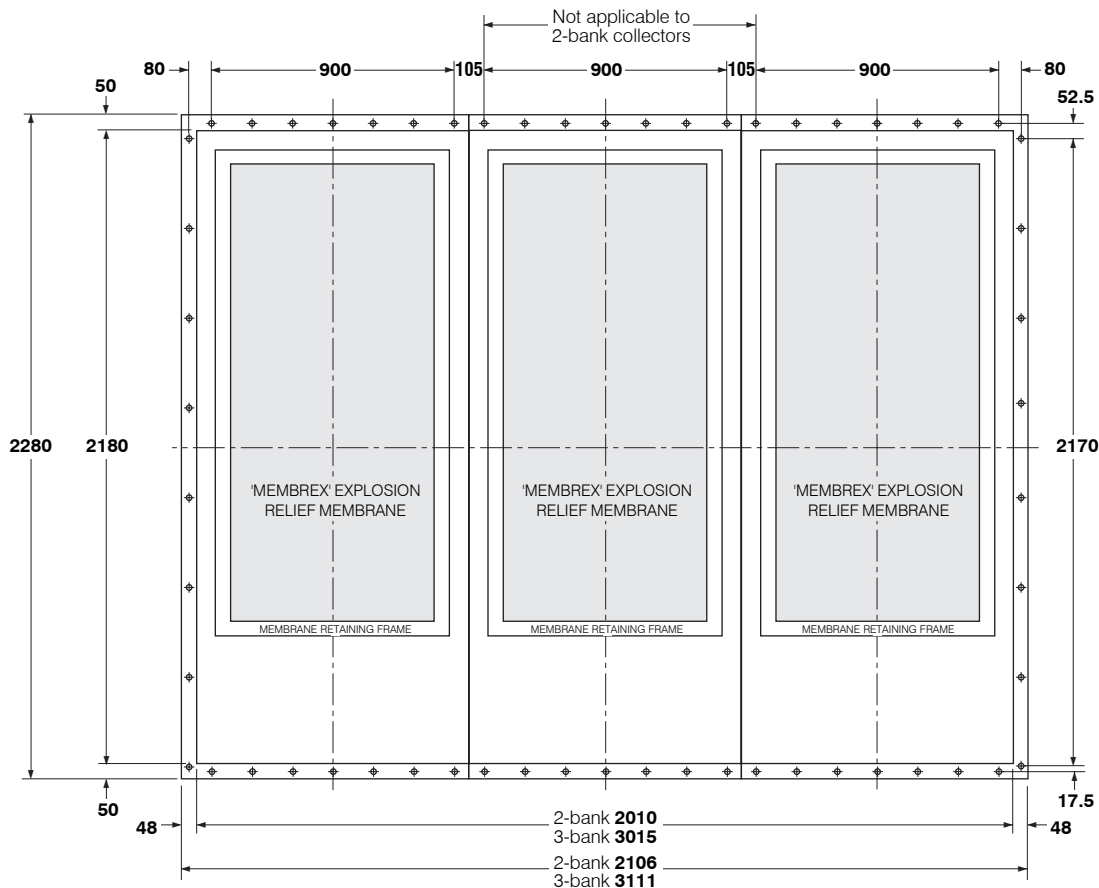
D 150 and 225 rear explosion relief flange

Rear explosion relief flange mounting details

Bottom and vertical holes $\varnothing 10\text{mm}$; top holes $10 \times 20\text{mm}$ slots. All for M8 bolts. Pitch centres 150mm.
NOTE: Mounting flange projects 100mm beyond rear of collector.

Data Sheet

Dalamic Concept Dust Collectors – Series D90-225



Top explosion relief flange mounting details

All holes 12 x 20mm slots for M10 bolts. Pitch centres: 150mm horizontally; 310mm vertically.
Mounting flange is flush with top of collector.

NOTE: The membrane retaining frame projects 80mm beyond top of collector.
Weather protection is available for those collectors fitted with top explosion relief.

DESIGN LIMITS (standard equipment)

Temperature range:

-10° to +60°C (Std.) or -10° to +100°C* (For temperatures above 100°C refer to Donaldson).

Pressure limits:

Collector with fan: as fan performance curves from shut-off to operating pressure.

Collector without fan: -500mm W.G. or -1140mm W.G. (For positive pressures refer to Donaldson).

Dimension tolerances:

±5mm on main dimensions. ±2mm on detail dimensions.

*For temperatures above 60°C the enclosed base cannot be used – an in-line attenuator may be required.

ELECTRICAL SPECIFICATIONS

Controls

Full automatic cleaning mechanism: Total Control Board

Pulse time: 60 ms

Interval time: 8 sec. or 12 sec.

Voltage input: 400V AC; 3 ph; 50 Hz

Protection class: IP65

Solenoid voltage: 24V DC